



DEBRIS MANAGEMENT PLAN

IBERIA PARISH, LOUISIANA



PREPARED BY:

IBERIA PARISH OFFICE OF EMERGENCY PREPAREDNESS

31 DECEMBER 2025

Table of Contents

1.0	Introduction and Purpose	4
	Scope	4
2.0	Organization and Assignment of Responsibilities	4
	Emergency Communications Strategy	5
3.0	Situations and Assumptions	7
	Situation	7
	Background	8
	Assumptions	8
	Types of Debris Expected:	9
4.0	Concept of Operations	9
	General	9
	Debris Preparation and First-Push by H-Hour	9
	Pre-Disaster Phases	10
	Increased Readiness Phase	10
	Response Plan	10
	Phase I-Emergency Debris Removal	11
	Phase II-Debris Removal Functions	12
	Debris Estimation	13
	Debris Management Sites	13
	Debris Collection Sectors	14
	Screening Criteria – Primary TDSR Site	15
5.0	Temporary Debris Storage and Reduction (TDSR) Site Selection Process	16
	TDSR Concept	16
	Screen Criteria – Primary TDSR Sites	16
	Screening Process	17
	Primary Candidate Sites	17
	Debris Management Techniques	18
	Best Management Practices for Debris Management	18
	LDEQ Information	19
	Public Information	19
	Health and Safety Plan and Procedures	20
	Health and Safety Contacts:	21
6.0	Administration and Logistics	21
	Administration	21
	Logistics	21
	Coordination of Unmet Needs	21
7.0	Force Account Labor	21
	Available Parish Staff:	22

Available Parish Equipment:..... 22

Annexes to Debris Emergency Management Plan 23

Annex A-Debris Estimating Model..... 23

Annex B-Best Practices for Debris Management (Tables) 28

Annex C-Major Routes for First Push: 39

Annex D-Disaster Debris Curbside Placement 40

Annex E-Debris Management Sectors 42

Annex F-Right of Entry Form 43

Annex G-PPDR & Demolition Eligibility Checklist 46

1.0 Introduction and Purpose

In the wake of environmental hazards and/or natural disasters, one of the key items that must be addressed is the clearing, removal and disposal of disaster debris. Debris removal often represents the first visible step towards recovery. Disaster debris management can become a highly contentious activity that impacts the political, environmental, and fiscal climate in a community for years after a disaster. Accordingly, the effective management of debris is essential to community restoration.

Scope

Iberia Parish intends to manage debris effectively and efficiently. The goal of this document is to provide an action plan to:

- Provide a framework for the rapid removal of debris thereby protecting public health and safety and the business base of Iberia Parish;
- Ensure that disaster debris is processed in accordance with environmental regulations;
- Maintain full compliance with the Federal Emergency Management Agency (FEMA,) Louisiana Department of Environmental Quality (LDEQ,) and any other federal, state or local regulations.
- Minimize the effect on the existing landfills in Iberia area, and;
- Maximize federal reimbursement for response and recovery activities.

The Iberia Parish DEMP is designed to provide the Parish with a flexible, scalable response to a wide range and intensity of natural disasters working within the framework of existing resources and inter-governmental relationships. The DEMP provides a guide to actions the Parish can take to prepare for and respond to the challenge of effectively managing disaster generated debris.

2.0 Organization and Assignment of Responsibilities

Role/Department	Key Responsibilities
Iberia Parish President/Chief Administrative Officer	Executes or directs the OHSEP Director to execute this DEMP.
Parish OHSEP Director	Overall activation, coordination with GOHSEP/FEMA/LDEQ, policy decisions and resource allocation
Debris Manager (Public Works/OHSEP Lead)	Direct supervision of all debris operations (collection, monitoring, site management, final disposal.)
Public Works Department (Public Works Lead)	Clearing essential roadways, initial damage assessment, force account labor (FAL) utilization, and maintaining Parish equipment.
Finance/Admin (Emergency Preparedness Coordinator/Purchasing Officer/Finance)	Cost tracking, procurement (RFP/contract management), load ticket reconciliation, and preparing FEMA reimbursement claims. Documentation is paramount.
Environmental/Permitting (Contracted Debris Company)	Coordinating with LDEQ (Waste, Air, Water) for Emergency Debris Site (EDS) activation, burning permits and compliance.
Public Information Officer	Communicating debris separation instructions, collection schedules, and safety warnings to the public.

Contracted Entities – 2025

Iberia Parish has active contracts in place within the following contractors to provide essential services during and after an emergency:

Storm Debris Removal:
DRC Emergency Services, LLC
111 Veterans Memorial Boulevard
Metairie, LA 70005
(504)482-2848

Storm Debris Collection Monitoring:
Thompson Consulting Services, LLC
2601 Maitland Center Parkway
Maitland, FL 32751
(407) 792-0018

Emergency Communications Strategy

Internal Communications:

- LWIN two-way radios
- Cell phone/text alerts/Iberia PINS notifications
- Email
- WebEOC

Public Communications:

- Parish Website: <https://iberiaparishgovernment.com/>
- Facebook: *Iberia Parish Government and Iberia Parish Office of Homeland Security & Emergency Preparedness* pages
- Press releases to local media from the Public Information Officer (PIO)
- RAVE Alert System

Information Provided to the Public

- Start/End of debris pickup
- Debris separation roles
- Curbside placement guidance
- Debris drop-off locations

Points of Contact

Points of Contact

- Iberia Parish Government
Emergency Operations Center
(337) 369-4427
- Iberia Parish Government
Brandon Miguez, OHSEP Director
Office of Homeland Security and Emergency Preparedness
(337) 369-4427
- Iberia Parish Government
Jean Romero, Director
Iberia Parish Public Works
(337) 364-8474
- Louisiana Department of Environmental Quality
Robert Thomas
LDEQ Waste Contact
(225) 219-3605
List of approved Emergency Debris Sites:
<https://internet.deq.louisiana.gov/portal/DIVISIONS/WASTE-PERMITS/CURRENTLY-APPROVED-EMERGENCY-DEBRIS-SITES>
Debris Management-Additional Information
[Debris Management \(Disaster Response\) | Louisiana Department of Environmental Quality](#)
Natural Disaster and Catastrophic Event Parish Resource Book
[Natural Disaster and Catastrophic Event Parish Resource Book | Louisiana Department of Environmental Quality](#)
- Louisiana Department of Transportation and Development
Ken Lissard
New Iberia Office
(337) 373-0048
(337) 262-6100
- Louisiana Department of Transportation and Development
Wm. Kyle Huffstickler
State Debris Management
(225) 379-1165 (Office)
(225) 916-6009 (Mobile)
Kyle.huffstickler@la.gov
- M. Todd Donmyer
Asst. Secretary Operations
225) 379-1200

3.0 Situations and Assumptions

Situation

- The extent of damage and the peculiarities of the transportation network in the incident area will influence the strategy developed by the debris management team.
- Natural disasters such as hurricanes, tornadoes, and flooding precipitate a variety of debris that include, but are not limited to, trees, appliances, personal property, and sediment.
- The quantity and type of debris generated from any particular disaster will be a function of the location and kind of event experienced, as well as its magnitude, duration and intensity.
- Mobile homes are of high concern as they are highly susceptible to damage from hurricanes, tornadoes and flooding events.
- The quantity and type of debris generated, its location, and the size of the area over which it is dispersed will have a direct impact on the type of removal and disposal methods utilized to address the debris problem, associated costs incurred, and how quickly the problem can be addressed.
- Unattended or long-standing debris may pose safety and health threats.
- Following disasters that result in significant debris, pre-existing disposal sites likely will not represent effective debris management solutions because of capacity limitations and continuous, regular solid waste management operations.

Hazards

Natural Hazards

- *Floods:* During extended periods of heavy rainfall, part of Iberia Parish are subject to the flooding caused by the drainage system's inability to handle the excessive water intake. All coastal property and inhabitants are subject to the dangers and damage caused by surge from high tides and strong winds or storm surge from hurricanes and other tropical systems.
- *Hurricanes:* Iberia Parish has a history of hurricane strikes that have produced damage from strong winds, tornadoes and storm surge.
- *Tornadoes:* The State of Louisiana and Iberia Parish experience occasional tornadoes that are capable of producing mass casualties and massive property damage.
- *Freezes:* While Iberia Parish enjoys a subtropical climate, the Parish is ill-prepared to handle the issues caused by hard freezes. Because of the infrequency of these freezes, long term mitigation measures are not practical.

Technological Hazards

- *Accidental Release of Hazardous Materials (Industrial or transportation accidents):* A large volume of hazardous materials are routinely transported to and through Iberia Parish on a daily basis. The accidental, sudden release is capable of creating a substantial number of casualties during a relatively brief period.

Background

Iberia Parish has a total area of 1,031 square miles of which, 574 square miles is land, and 456 square miles is water.

Major Highways

- U.S. Federal Highway 90
- Louisiana Highway 182
- Louisiana Highway 674
- Louisiana Highway 675
- Louisiana Highway 31
- Louisiana Highway 14
- Louisiana Highway 88
- Louisiana Highway 85
- Louisiana Highway 83

Vulnerabilities and Consequences of Disruption

The facilities and operations of Iberia Parish Public Works Department are vulnerable to both external and internal disasters. External disasters are events that occur in the community, such as hurricanes, utility system failures, etc., which may or may not directly impact both the need of agencies services as well as their ability to deliver those services. An external disaster could create a response requirement by the citizens of Iberia Parish increasing their need for services normally performed by this department. An internal disaster is an event, such as structure fire or computer system failure that directly impacts on the department itself and its capabilities to complete its essential functions. An internal disaster, impacting the work area of Public Works, would deprive the employees of access to their files, vendor lists, contracts, etc. and will also impede their ability to communicate internally.

Assumptions

Several assumptions have been relied upon to develop this plan:

- Immediately following an emergency there may be heavy demand for debris removal service. Anticipated demand for these services requires effective use of resources. Transportation routes may be damaged or destroyed requiring close coordination between law enforcement, Public Works and the Louisiana Department of Transportation and Development.
- Multi pass collection will be required.
- The amount of debris resulting from a major natural disaster will exceed local solid waste removal and disposal capacities
- Contracts and agreements with non-governmental providers of critical supplies and services will be honored by those providers to expedite purchase and delivery of resources and contracted personnel.
- Access to and use of Louisiana State Contracts and Purchase Agreements will be available and other cooperative purchasing agreements from other purchasing sources outside of Iberia Parish will be established during times of normalcy.
- Several years of landfill capacity may be consumed during the debris disposal process.

Types of Debris Expected:

- Vegetative
- Construction & Demolition (C&D)
- White goods (appliances)
- Household Hazardous Waste (HHW)
- Electronics (e-waste)
- Tires
- Soil, sand, sediment

4.0 Concept of Operations

General

The following is a description of the preparatory and management actions to be completed during each disaster phase, including special considerations for use of each of the primary sites.

With the exception of debris on state and federal highways, Public Works will be the Lead Department for:

- Clearing major roads for emergency response.
- Removing life/safety hazards.
- Coordinating with law enforcement and utilities.
- Supporting damage assessment

The priority for first-push is to be:

- Hospitals, police, fire stations
- Major evacuation routes
- Critical facilities (water, wastewater, EOC, shelters)
- Residential access

Debris Preparation and First-Push by H-Hour

H-120	Begin making contact with our Debris Contractor and Monitoring Contractor
H-120	Validate TDSR sites and points of contact
H-hour	
H+12-18	Conduct first debris meeting (Cut and push route validation/estimation/search and rescue.
H+18-24	Begin 2 times daily debris meeting with Parish officials and stakeholders
H+18-24	Begin PSAs twice daily to include debris placement and debris pickup schedule
H+24-48	Continue cut and push and begin debris pickup, if possible

Pre-Disaster Phases

Pre-disaster, Iberia Parish officials should review the DEMP, focusing on the following:

- Review and validate the procedures in the DEMP.
- Forming and training Damage Assessment Teams (DAT) in debris estimating techniques.
- Exercising the DEMP with Parish personnel and contractors.

Training for disaster debris management should be conducted in conjunction with annual disaster preparedness exercises and should involve both Damage Assessment Teams and selected contractors.

Key activities to be review on an annual basis include, but are not limited to:

- Skill building and refresher training for all key Parish personnel and selected contractors in the actions to be taken immediately before and after a disaster. Such skill building should include the formation and training of DATs capable of estimating and characterizing debris.
- Re-verification of contractor qualifications and certifications to ensure that selected contractors are fully capable of discharging their debris management responsibilities when activated.
- Update of data in the DEMP to include debris estimates, TDSR site availability and current contractor resources available.
- Meet with all parties involved in Disaster Debris annually.

Increased Readiness Phase

When a natural disaster is possible, probable or imminent, there are actions that must be taken to ensure the capability of the Parish to respond with maximum effectiveness. Among these actions are usually performed within H-120, if there is notice of the event:

- Refining estimates of expected debris based on the characteristics of the natural disaster. (i.e. base estimates on wind speed, rain total estimates, etc.)
- Pre-position resources, both equipment and personnel, to keep them safe and ensure a speedy response post-disaster.
- Activate EOC and exercise all communications methods to ensure they are in working order.
- Prepare and distribute all documents needed to track and account for debris.
- Initiate pre-disaster public service announcements providing instructions on how to handle debris post-disaster. Public notification, at this phase, should be at a minimum but should provide basic details concerning the handling of disaster debris and separation and placement of debris at curbside.

Response Plan

During the response phase, the DEMP should be implemented, usually within +70 hours of H-hour. Key actions related to debris include:

- Deployment of Damage Assessment Teams capable of estimating and reporting debris quantities.
- Activation of contracted debris management resources.
- Deployment of Parish forces to begin initial roadway clearing.
- Establishment of communication and coordination with private and public utilities so they are ready to assess and begin repairs once the roadways have been cleared.

Commented [NH1]: You asked me to include the Debris H-hr items here and above. Where do you want them???

Commented [BM2R1]: PLACE IT UNDER CONCEPT OF OPERATIONS

Commented [NH3R1]: Done.

This phase typically begins within 70 hours of a natural disaster, however, that time frame is determined by the amount of debris and damage generated by the disaster. This phase includes initial estimates on the scope of debris generated and the clearing of essential transportation routes. Initial reports of damage to public facilities and infrastructure should be made by the crews performing “first push” duties.

Key Facilities include, but are not limited to:

- Iberia Medical Center, 2315 East Main St, New Iberia
- Iberia Medical Center, North Campus, 600 North Lewis St, New Iberia
- Emergency Services Facilities
 - Emergency Operations Center
 - Law enforcement facilities
 - Fire Stations
 - EMS Services
 - Utility Companies
 - Public Works facilities
 - Waste water treatment plants

The clearing of disaster debris in the “first push” is accomplished by simply pushing the material to the side of the transportation corridors to provide access. Only disaster debris that presents an immediate threat to human health or safety is to be removed during the response phase.

Phase I-Emergency Debris Removal

There is an immediate need to open emergency access routes into devastated areas following any type of major disaster. Identifying essential routes within the Parish is essential to emergency operations. This information is essential for directing the efforts of local assets and for identifying areas where assistance may be needed. This phase usually begins within 70 hours of H-hour and continues until all major arteries are passable.

- Emergency Debris Removal involves the opening of roadways by moving debris to the shoulder of the road. **There is no attempt to dispose of the debris, only to clear key access routes to expedite:**
 - Movement of emergency vehicles
 - Resumption of critical services
 - The assessment of damage to critical infrastructure
- All activities which occur and expenses which are incurred during Phase I of the debris removal process shall be documented using the appropriate public assistance documentation provided by FEMA or other compatible method.
- Removal of debris from all federal and state highways is the responsibility of the Louisiana Department of Transportation and Development (DOTD.) Public crews are not to clear federal and state highways unless assistance is requested by DOTD and/or it is confirmed that a Memorandum of Agreement is signed between the Parish and DOTD.

Phase II-Debris Removal Functions

Public Right-of-way Debris Removal

- During Phase I of the debris removal activities, the debris is simply pushed to the shoulder of the roadways for emergency access to the impacted areas. There is little, if any, concern for sorting debris at that time. The objective is simply to provide for the safe movement of emergency vehicles into and out of the disaster area.
- As removal operations progress, the initial roadside piles of debris become the dumping locations for additional yard waste and other disaster debris such as construction materials, personal property, trash, white goods (refrigerators, washers, dryers, water heaters, etc.), roofing materials, and hazardous waste (household, commercial and agricultural chemicals.)
- Expedient removal of debris from in front of residents' homes should become a priority since it is a positive sign that restoration actions are underway and may help the mental state of residents. The removal operations will also assist in expediting the replacement of key utilities located along public rights-of-way.

Private Property Debris Removal (PPDR)

The removal of disaster debris from private property is generally not allowed. It is allowed if the debris on the property could create health and safety concerns with respect to severely damaged property. Officials must ensure that legal documents are signed by the property owner giving the Parish the permission to enter the property and holding the Parish harmless during this process.

If the Parish's involvement is required to remove debris from private property, follow the following procedures to ensure maximum reimbursement:

1. Parish requests FEMA PPDR approval.
2. Public announcement of Right-of-Entry (ROE) application locations
3. ROE forms submitted by property owners
4. Eligibility verification (title check, damage assessment)
5. FEMA approves properties
6. Removal work orders issued to contractor/monitors

For normal disaster debris, Iberia Parish generally relies on non-profit organizations to assist homeowners in getting their debris to the public right-of-way.

Household Hazardous Waste Removal

- Household Hazardous Waste may be generated as a result of a manmade, technological or natural disaster. It may consist of common household chemicals, propane tanks, oxygen bottles batteries and industrial and agricultural chemicals. These items may be mixed into the debris stream and will require close attention throughout the debris removal and disposal process.
- Hazardous substances should be separated from other debris prior to removal and removed by qualified contractors.
- A separate staging area for household hazardous waste and contaminated debris should be established at each site. Removal and disposal shall be completed using authorized contractors in accordance with state and federal regulations.
- See Annex D for guidelines for placement of debris at right-of-way.

Debris Estimation

The volume of debris that is generated by an event can be estimated by several methods. Through the “windshield survey” assessment, an estimate can be obtained of the amount and type of debris present. If available, an “aerial assessment” can be utilized. This method can use be visually obtained or by using aerial photographs.

Please see methods of estimated in Annex A of this document.

Debris Management Sites

Environmental Requirements for Temporary Debris Storage and Reduction Sites (TDSR)

A key factor to be addressed in establishing debris management operations are environmental requirements and the “standards of care” to which Parish personnel and contractors will be held. The strict adherence to these requirements in operating TDSR sites will help to avoid issues during the removal, separation, reduction and disposal of disaster debris.

Under an emergency declaration, issued by the Governor of Louisiana, some environmental regulations may be suspended so that public health and safety issues may be more addressed in a timely manner.

All TDSR and final disposal sites must incorporate the following environment measures at each site:

- Dust suppression
- Stormwater/run-off control
- HHW segregation
- Soil and groundwater protection at DMS.

Water

With over 300 miles of storm water drainage canals within Iberia Parish, water quality issues are of great concern in the operation of TDSR sites. As a result of storms, debris will be deposited into the drainage canal system throughout the Parish. Depending on the severity of the disaster, the Parish may require contractor support to remove the debris and reestablish unobstructed water flow.

Solid waste in these canals can be difficult to deal with. It may become necessary to utilize heavy equipment to remove this type of debris from drainage canals.

In accordance with the National Pollutant Discharge Elimination System (NPDES) and the Parish's storm water permit, Best Management Practices (BMP) will be employed at each TDSR sites to reduce the volume of potentially harmful runoff entering Iberia Parish's drainage canal system. Where appropriate, retention features will be utilized at TDSR sites to collect storm water. Erosion and sediment controls will also be used at each TDSR site to further control runoff. Contractors will avoid processing debris in close proximity to any storm water inlets or drains.

Regulations require the TDSR sites to include property boundaries, physical limits of all operations (i.e. segregation, reduction and storage areas,) BMPs, points of ingress and egress, drainage patterns and surrounding land uses. It also details setbacks from water bodies, onsite potable wells and community water supplies. Specifically, the setback distances shall be:

- 100 feet from offsite potable water wells, no setback required from onsite water wells.
- 50 feet from bodies of water
- 200 feet from wells serving community water supplies

Hazardous Waste

Hazardous waste is a principal concern to Parish Officials. The removal and lawful disposal should be a priority to ensure the safety and health of Parish residents. Iberia Parish has stipulated, in their Request for Qualifications (RFQ) and in the awarded contract, that the Debris Management Contractor must provide qualified personnel to collect and properly dispose of all hazardous materials placed to the curb post-storm. Businesses and the Louisiana Department of Environmental Quality are responsible for the cleanup of any spills caused by a disaster.

Air

Incineration of debris will be used as a last resort. Currently, the initial plan is to bring vegetative or “green” debris to the Iberia Parish Landfill if it is to be incinerated.

Debris Collection Sectors

The “debris collection sector” concept is central to the efficient management of debris. The concept is designed to identify the optimal geographic boundaries of service areas for TDSR sites based upon the following factors. Iberia Parish has decided to use the designated Parish political districts as debris sectors. A map of the political districts can be found in Annex E.

- Similarity of debris likely to be generated;
- Haul distances;
- Roadway systems and geo graphic barriers (canals, etc. ;)
- Availability and capacity of Parish TDSR sites;
- Optimal contractor service areas;
- Compatibility with emergency (fire and police) or public utility response zones.

Generally, a debris collection sector is the service area around one or more TDSR sites. Defining debris collection sectors also minimizes hauling distances to TDSR sites. Accordingly, the debris collection sector allows for the efficient removal, temporary storage and processing of disaster debris by maximizing the utility of limited haul routes.

Debris collection sectors can also be the basis for the development of contracts where debris clearing, removal and processing contractor responsibilities are divided according to definitive geographic boundaries.

The selection of potential candidate sites coupled with estimates for quantity and composition of debris, limited haul routes and availability of Parish and contractor resources, resulted in a decision to establish forty (14) debris collection sectors for the Parish. The DEMP Group is composed of representatives from the Public Works Department with debris management responsibilities, has designated two (2) primary sites for the Parish to be serviced by the 14 debris collection sectors.

Screening Criteria – Primary TDSR Site

According to the disaster debris calculations for Iberia Parish, a category 3 hurricane would require approximately 24 acres for the temporary storage segregation and processing of disaster debris. Factors considered in the selection of potential TDSR sites for Iberia Parish consisted of the following:

- **Topographic constraints** (i.e. slope, erosion, geologic stability)-Iberia Parish is level, accordingly, few topographic constraints affected site selection.
- **Available acreage**-A minimum of 15 acres was established as the threshold for acceptable primary site candidates and a minimum of 1 acre for secondary candidate sites.
- **Availability**-Sites which are under the control of the Parish or can be made available to the Parish, either before a disaster or on short notice, following a disaster occurrence, are preferred.
- **Distance from debris sources**-Haul distances less than 30 minutes from the source of the material are preferred.
- **Access to the site from primary transportation arteries and availability of utilities**-Candidate sites must be easily accessible from major arterials and haul routes and have water and sewer, if possible, or at least be close to a source of water for fire suppression.
- **Existence and type of vegetation**-Clear sites or sites with sparse vegetation are preferred over heavily wooded sites.
- **Groundwater table height**-Choose sites where the possibility of groundwater or near-surface aquifer contamination is low.
- **Existence of sensitive or regulated natural resources or restricted zones**-Do not choose sites that include wetlands, areas that are known to have federally protected species of wildlife, water quality buffers, municipal water supply areas, floodplains, geologically unstable lands, and cultural/archaeological/historical areas.
- **Known environmental impairments**-TDSR areas should not be located on property where existing soil and groundwater contamination exists.
- **Proximity to Canals and Other Waterways**-Louisiana Department of Environmental Quality (LDEQ) regulations establishes certain setback distances from canals and other waters from the site of solid waste facilities.
- **Adjacency to residential areas, important public facilities or sensitive populations**-Because of the smoke, noise, dust, traffic and nighttime lighting required for the operation of TDSR sites, these sites should not be located adjacent to sensitive populations.
- **Other Conflicting Land Uses**-TDSR sites should avoid such features as runways, flight paths, etc.

The factors above were selected to be compatible with the screening criteria used for siting solid waste landfills, as contained in the Louisiana Department of Environmental Protection (FDEP) Solid Waste Management Regulations, Chapter 62-701.300 (Effective 5-27-2001,) and the FEMA Debris Management Manual. Use of these criteria ensures that only the best, least disruptive and most survivable sites were selected as candidates for use.

5.0 Temporary Debris Storage and Reduction (TDSR) Site Selection Process

TDSR Concept

- TDSR sites are used following a debris-generating disaster to temporarily store, sort and process disaster debris in an area accessible by hauling routes and within the generally proximity of the debris. TDSR sites can either be first line primary sites for storage and processing or, if needed, back-up secondary sites. TDSR sites typically consists of areas for placement of raw or separated debris, space for separating debris into constituent waste streams, storage for processed debris and the necessary support facilities for the personnel managing and monitoring the debris site. TDSR sites must provide a basis for monitoring and tracing the nature and volume of material being accepted, processed and removed to ensure proper payment to the Contractor and reimbursement by FEMA for debris management operations.
- TDSR sites are operated by private contractors with Parish oversight. The Parish will maintain a liaison capable of verifying the nature and volume of debris accepted, processed and removed, as well as the contractor's compliance with all operational criterial and specifications.
- TDSR sites are critical to minimizing the impact of a debris generating disaster has on existing landfills by redirecting waste streams to alternate destinations such as water burning boiler facilities, recycling facilities and, in the case of mulched green waste, agricultural uses. TDSR sites can provide an important storage buffer to the Parish in expediting the removal of debris from Parish rights-of-way.
- TDSR sites are intended only as temporary features. Depending on the disaster intensity, TDSR sites may operate from one to six months, when activated. TDSR sites are part of a flexible response approach that Iberia Parish Government has adopted. Individual sites may or may not be activated depending on the severity of the disaster and the preferences of the hauling contractors retained by the Parish.

Screen Criteria – Primary TDSR Sites

According to the disaster debris calculations for Iberia Parish, a category 3 hurricane would require approximately 24 acres for the temporary storage segregation and processing of disaster debris. Factors considered in the selection of potential TDSR sited for Iberia Parish consisted of the following:

- Iberia Parish is level; there are few topographic constraints affected site selection.
- A minimum of 15 acres was established as the threshold for acceptable primary site candidates and a minimum of 1 acre for secondary candidate sites. The primary site is located at 5802 Coteau Road in New Iberia; the secondary site is located off of Parish Road 914.
- Sites which are under the control of the Parish or can be made available to the Parish, either before a disaster or on short notice following a disaster, are preferred.
- Haul distances of less than 30 minutes from the source of the debris to the site are preferred.
- Candidate sites must be easily accessible from major arteries and haul routes and have water and sewer, if possible, or at least be close to a source of water for fire suppression.
- Cleared sites or sites with sparse vegetation are preferred over heavily wooded sites.

- Site should be located away from open water sources or near surface water tables. If no property is available, all precautions should be taken to avoid contamination of all water sources.
- Site should not be located on any property of a sensitive or regulated natural resource or restricted zones. Examples of these are wetlands, protected species, water quality, buffers, municipal water supply areas, floodplains, geologically unstable lands and cultural/archaeological/historical areas.
- TDSR areas should avoid sites that have existing soil and/or groundwater contamination.
- The Louisiana Department of Environmental Quality (LDEQ) regulations establish certain distances that TDSR sites must be from navigable waterways and solid waste facilities.
- Because of the smoke, noise, dust, traffic and nighttime lighting required for the operation of TDSR sites, these sites should not be located adjacent to sensitive populations, residential areas, or important public facilities.
- TDSR sites should avoid such features as runways, flight operations, flight paths, etc.

The factors above were selected to be compatible with the screening criteria used for siting solid waste landfills as contained in the Louisiana Department Quality, Disaster Debris Management and the FEMA Debris Management Guide. Use of these criteria ensures that only the best, least disruptive and most serviceable sites are selected.

Screening Process

The DEMP Group will employ the following procedures in order to screen possible TDSR sites.

- Review GIS maps of the Parish to identify tracts of all publicly owned property and compile a list of all possible sites. If public land is not available, then Parish officials should approach private landowners to lease land that fit all criteria for a temporary site.
- Review FEMA floodplains maps showing the limits of the storm surge zones, 100- year flooding limits and 500-year flooding limits.
- Determine the optimal debris management method at each potential candidate site.
- Visit all candidate sites to gather basic data regarding the suitability of the site.
- Provide LDEQ with descriptions of each site.

Select a primary and secondary group of candidate sites, which best fit the criteria. Given the limitations of publicly owned land, the DEMP determined on private land as primary sites and publicly owned land as secondary sites. Many of the public sites were disqualified from the list of potential sites due to size, current uses or community acceptance issues. The DEMP also determined that no suitable state or federal lands were available for consideration. Fortunately, the candidate sites selected were strategically located throughout the Parish and in relatively close proximity to the urban center of Iberia Parish, where a majority of the disaster debris would likely be generated.

Primary Candidate Sites

The calculations for a category 3 hurricane, using the U.S. Army Corps of Engineers (USACE) model, show that multiple TDSR sites may be required to temporarily store, sort and process disaster debris. Each site may need to be dedicated for different uses. This plan identifies two TDSR sites

Commented [BM4]: We need to divide the tdsr and the parish landfill as TDSR and final disposition site

throughout the Parish, which will provide approximately 32 acres and be serviced by fourteen (14) debris collection sectors. Each site may need to be dedicated for different uses.

P-1 STAGING/COLLECTION SITE: (GPS: 30.04361100, -91.96379400)

Location: 5802 Coteau Road, New Iberia
Acreage: 17
Owner: Michael Maraist
Contact: 337-365-8246

P-2 STAGING/COLLECTION SITE: (GPS: 29.94091100, -91.87555600)

Location: Iberia Parish Government – Par Rd 914 Debris Site
Acreage: 15
Owner: Iberia Parish Government
Contact: Iberia Parish Government, Public Works, (337) 364-8474

Once vegetative debris and eligible materials have been reduced, they will be hauled to the Iberia Parish Landfill for burial. The Iberia Parish Landfill is located at 5905 Freetown Road in rural Iberia Parish.

Debris Management Techniques

Debris removal and processing techniques are available for the following categories of debris anticipated after a natural disaster.

- Vegetation and other “green waste”
- Metals and white goods
- Water craft and pier fittings
- Mixed debris
- Woody construction and demolition debris (CDD)
- Asphalt roofing
- Gypsum and wallboard
- Plastic including plastic sheeting, signs and plastic water bottles
- Aggregate, block and brick rubble
- Household furnishings, clothing and carpet
- Hazardous wastes including
- Household hazardous wastes
- Fugitive commercially generated hazardous debris
- Construction and demolition containing asbestos and/or lead

Best Management Practices for Debris Management

Optimum management techniques, based on the unique conditions of the Parish and post-disaster situations exist for all debris streams. These techniques were termed “best management practices” (BMPs) and can be generally determined prior to the onset of a disaster.

Best management practices have been identified using the following criteria adopted from the Hawaii Disaster Debris Plan. Those which are applicable to Iberia Parish area:

- Processing costs
- Capital costs
- Debris reduction efficiency
- Environmental acceptability
- Effect on human health and safety
- Availability of “end use” markets
- Public acceptability

These factors vary according to the location of the TDSR sites selected. (Hawaii Department of Health & Office of Civil Defense, 2000.)

The debris management options available to Iberia Parish are:

- Direct burial/burning of processed and unprocessed debris in the Iberia Parish Landfill
- Separation at the source (at curbside) for off-site recycling or composting
- Post collection separation at TDSR sites
- Processing from mixed materials for off-site composting
- Grinding or mulching within the Parish at TDSR sites

See Annex B for Tables that outline the general best management practices

LDEQ Information

For more information on Debris Management, see <https://deq.louisiana.gov/page/disaster-debris-management>.

Public Information

Debris separation is an important tool in efficiently managing disaster debris. Effective separation of materials into waste that have the same or similar processing methods and/or ultimate destination points can significantly increase the efficiency of debris removal and reduction. Debris can frequently be separated into building materials, green waste, household goods, metals and white goods, garbage and perishables, and hazardous waste. Separation can best be accomplished at curbside.

For the purpose of this plan, it is recommended that the public information campaign encourages the public to separate debris and wastes in the following basic categories:

- Food and other perishables, garbage
- Green waste and vegetation (bundled up or piled up)
- Building materials and household goods
- White goods and metals
- Hazardous waste (in marked containers)

Public information is critical to the disaster debris management during this phase. Public Services Announcements (PSAs) regarding disaster debris should be released regularly and should include the following up to date information:

- Curbside sorting information
- Collection dates and times
- Collection areas and routes
- Debris eligible and ineligible for pick-up

Residents should be provided with information on the sorting of debris on public rights-of-way.

Debris should be sorted by category:

- Vegetative
- C&D
- White goods
- Electronics
- Tires
- HHW (segregated if possible)

Residents should be told to keep piles of debris at a manageable level and away from power lines and poles. This will ensure the safety of personnel operating loading equipment during pickup.

These PSAs should be disseminated throughout collection areas by multiple media if possible. The longer the recovery period, the more important it becomes to ensure citizens that the disaster debris is being managed in an effective manner. It should be noted that municipal solid waste collection will most likely be operational within a few days following the disaster.

Health and Safety Plan and Procedures

Parish employees and contractors will follow all Occupational Safety and Health Administration (OSHA,) Environmental Protection Agency (EPA,) FEMA 325 and 327 and all local and state published health and safety procedures pertaining to debris removal and disposal operations as well as all federal, state and local environmental regulations. Contractors hired by the Parish will also follow all Parish, State and Federal health and safety regulations and guidance pertaining to debris removal and disposal operations. Contractors will be required to provide the Debris Manager with a copy of their Health and Safety Plan before commencing work for the Parish. During debris removal operations, the Debris Removal Monitoring firm will hold health and safety meetings at the start of each work day for debris removal contractors in an effort to ensure adherence to safety rules and procedures while operations are conducted. The Debris Removal Monitoring firm is responsible for training debris staff during debris removal operations to monitor and ensure adherence to safety rules and procedures. Any and all health and safety incidents will be reported to the Debris Manager at the conclusion of each day of operations.

During debris operations, all contractors and employees must:

- Adhere to PPE requirements (hard hats, vests, safety glasses, gloves)
- Have traffic control around work zones
- Attend daily safety briefings
- Use precautions to eliminate heat stress and stay hydrated.

In the event of an emergency at any locations, call 9-1-1.

Health and Safety Contacts:

- Call 9-1-1 for any fire or to have a fire department standby. Iberia Parish 9-1-1 dispatches all fire departments in the Parish.
- Cleco
Electrical Vendor
(800) 622-6537 (Downed power line or fire)
(855) 656-1919 (Downed power line or fire)
- Entergy
Electrical Vendor
(800) 968-8243 (800-OUTAGE)
- Southwest Louisiana EMC (SLEMCO)
Electrical Vendor
(888) 275-3626

6.0 Administration and Logistics

Administration

- ESF Leads will send information to the OHSEP Director at the designated times during the day when the Emergency Operations Center is activated.
- A synopsis of the information obtained from the ESF Leads and other sources, i.e. utility companies, will be presented to the Parish President and entered into WebEOC via a SITREP.
- Expenditures and overtime hours dedicated to the disaster will be tracked. If the disaster is a federally declared disaster or an incident involving a company, this information should be forwarded by each department to the Emergency Preparedness Coordinator for reimbursement purposes.

Logistics

Coordination of Unmet Needs

In the event that the Parish's resources are exhausted, the Parish will request assistance from one or more of the following:

- Contracted services
- Surrounding Parishes - IMAC
- State Contracts Parish Facilitated
- Governor's Office of Homeland Security and Emergency Preparedness (IMAC-EMAC)
- Private Partners

7.0 Force Account Labor

Following a small event, it may not be cost effective to execute the Debris Services contracts. Public Works would be assigned to debris removal and debris monitoring. It may also become necessary to use Force Account Labor when:

- For no-notice disasters or when debris services contractors are not local, Public Works will be used for first push and/or the first 24-72 hours of clearance.
- When required by FEMA
- When contractor resources are delayed.

Available Parish Staff:

- Public Works crews
- Fleet services
- Sheriff's support (as needed)

Available Parish Equipment:

- Dump Trucks
- Loaders/Backhoes
- Chainsaws/chippers
- Other equipment used to move debris
- Traffic control equipment

Annexes to Debris Emergency Management Plan

Annex A-Debris Estimating Model

The United States Army Corps of Engineers (USACE) has developed a disaster debris estimating model to forecast hurricane generated debris volumes. The model is based on data from previous hurricanes and has a predicted accuracy of plus or minus 30 percent.

Factors utilized in the modeling include the following:

Number of households,
Intensity of the storm,
Vegetative cover,
Commercial density, and
Precipitation

The model used the following formula to estimate disaster debris volumes:

Q = H*C*V*B*S where:

Q is the quantity of debris in cubic yards

H is the number of households determined by population

C is the storm category factor in cubic yards

V is the vegetation characteristic multiplier

B is the commercial/business/industrial use multiplier

S is the storm precipitation characteristic multiplier

The number of households (H) is calculated by determining the population and assuming that there are three persons per households.

Each of the remaining parameters has been assigned a value or "multiplier," which allows for adjustment of the factor to local conditions.

Table 1 includes disaster debris factors for use in completing calculations for Iberia Parish. It also outlines "multipliers" for the factors in the model. The model is based on the premise that, as the intensity of the storm and rainfall increase, the amount of debris generated will increase.

The calculations contained in this plan have been tailored to specific conditions of the Parish. These calculations were made following field reconnaissance and a review of aerial photography.

Table A.1:

Hurricane Category	“C” Factor	Vegetative Cover	“V” Multiplier	Com’l Density	“B” Multiplier	Precipitation	“S” Multiplier
1	2 cy	Light	1.1	Light	1	None/light	1.0
2	8 cy	Medium	1.3	Medium	1.2	Medium/Heavy	1.3
3	26 cy	Heavy	1.5	Heavy	1.3	Medium/Heavy	1.3
4	50 cy	Heavy	1.5	Heavy	1.3	Medium/Heavy	1.3
5	80 cy	Heavy	1.5	Heavy	1.3	Medium/Heavy	1.3

The estimates for households in this plan are based upon the estimated on the general populations for the past decade of just over 70,000. The data can be easily adjusted as population estimates are changed.

Debris Estimates

Debris estimates from this evaluation conclude that approximately 2.8 million cubic yards of debris would be generated in a Category 5 storm, the “worst case scenario.”

Table next set of tables provide a breakdown of the general types of debris that would be generated in various strengths of tropical cyclones and provide an estimate of the amount of land that would be required to temporarily store and process the various types of debris generated from such a storm. Land space requirements for the stockpiling and processing of debris ranges from only several acres for a category 1 storm to nearly 100 acres for a category 5 hurricane.

The composition of debris provided within these tables is based on the visual site reconnaissance of the Parish, review of building code data, aerial photographs, and information from Hurricane Andrew. Site requirements assume that the maximum storage volume of debris at the site would be handled twice during the life of the TDSR and that material can be stacked up to 20 feet at the site.

Table A.2 Debris Estimates and TDSR Site Requirements for Category 1 Hurricane, with Light Vegetation, Light Commercial/Industrial/Business, 20 ft. Stack Height and 2 Cycles

Debris Type	Percent Composition	Cubic Yards	Site Requirements in Acres
Clean, Woody Debris (Green Waste)	50	45,000	1.16
Mixed Construction and Demolition (C&D) Debris	15	13,500	0.35
Household Goods Debris (incineration)	15	13,500	0.35
Soils	2	21,800	0.05
Metal and White Goods	3	2,700	0.07
Landfillable Materials (putrescibles, garbage)	15	13,500	0.35
TOTAL	100	90,000	2.32

Table A.3 Debris Estimates and TDSR Site Requirements for Category 2 Hurricane, with Light Vegetation, Light Commercial/Industrial/Business, 20 ft. Stack Height and 2 Cycles

Debris Type	Percent Composition	Cubic Yards	Site Requirements in Acres
Clean, Woody Debris (Green Waste)	15	57,000	1.47
Mixed Construction and Demolition (C&D) Debris	20	76,000	1.95
Household Goods Debris (incineration)	20	76,000	1.95
Soils	2	7,600	0.20
Metal and White Goods	3	11,400	0.29
Landfillable Materials (putrescibles, garbage)	40	152,000	3.91
TOTAL	100	380,000	9.77

Table A.4 Debris Estimates and TDSR Site Requirements for Category 3 Hurricane, with Light Vegetation, Light Commercial/Industrial/Business, 20 ft. Stack Height and 2 Cycles

Debris Type	Percent Composition	Cubic Yards	Site Requirements in Acres
Clean, Woody Debris (Green Waste)	15	184,500	4.75
Mixed Construction and Demolition (C&D) Debris	20	246,000	6.33
Household Goods Debris (incineration)	20	246,000	6.33
Soils	2	24,600	0.63
Metal and White Goods	3	36,900	0.95
Landfillable Materials (putrescibles, garbage)	40	492,000	12.66
TOTAL	100	1,230,000	31.64

Table A.5 Debris Estimates and TDSR Site Requirements for Category 4 Hurricane, with Light Vegetation, Light Commercial/Industrial/Business, 20 ft. Stack Height and 2 Cycles

Debris Type	Percent Composition	Cubic Yards	Site Requirements in Acres
Clean, Woody Debris (Green Waste)	15	357,000	9.18
Mixed Construction and Demolition (C&D) Debris	20	476,000	12.24
Household Goods Debris (incineration)	20	476,000	12.24
Soils	2	47,600	1.22
Metal and White Goods	3	71,400	1.84
Landfillable Materials (putrescibles, garbage)	40	952,000	24.49
TOTAL	100	2,380,000	61.22

Table A.6 Debris Estimates and TDSR Site Requirements for Category 5 Hurricane, with Light Vegetation, Light Commercial/Industrial/Business, 20 ft. Stack Height and 2 Cycles

Debris Type	Percent Composition	Cubic Yards	Site Requirements in Acres
Clean, Woody Debris (Green Waste)	15	571,500	14.70
Mixed Construction and Demolition (C&D) Debris	20	762,000	19.60
Household Goods Debris (incineration)	20	762,000	19.60
Soils	2	76,200	1.96
Metal and White Goods	3	114,300	2.94
Landfillable Materials (putrescibles, garbage)	40	1,524,000	39.20
TOTAL	100	3,810,000	98.01

Annex B-Best Practices for Debris Management (Tables)

Table B.1, GREEN WASTE

Definition: Tree limbs, stumps and leaves, brush grass and incidental soil.

RECOMMENDED BMP:

Objective: Efficient and cost-effective recovery and diversion from landfill.

Response Plan: Source separate green waste during response, with the possible exception of the first 24 hours, if public health and safety is endangered by limited access from roadways. Remove green waste from roadways and separate prior to collection to facilitate diversion.

Recovery Phase: Source separate green waste as early as possible in the collection process. Remove green waste from roadways and separate it prior to collection to facilitate diversion. Citizens should separate for collection at the curbside. If mobile chippers are available, green waste may be chipped at the time of collection. Process green waste upon arrival at TDSR for use as compost or fuel for a business boiler, depending on cost effectiveness of composting and the availability of markets and practical end-uses. "Compost" is used in this plan to include mulch, which is not a fully matured product and is used for ground cover and erosion control. In the event that the disaster is severe with major amounts of vegetation, green waste may be air curtain incinerated at TDSR, at Parish's option.

Management Techniques	Option Feasible	Cost Feasibility	Capital Cost Feasibility	Debris Reduction Efficiency	Environmental Friendliness	Human Health & Safety	Current Availability of Resources & Markets	Public Adaptability
Source separation for composting or incineration	Yes	High Small additional labor cost	High Use existing equipment	High-Best efficiency	High	High	High-Existing composting market can be limited and could be negatively damaged by production of too much product. Incineration is a back-up market.	High
Processing from mixed materials for composting or incineration	No	Moderate: large additional labor cost	High-Small capital cost	Low	High	Moderate health and safety risks involved	High-Existing market that is supply limited	
Landfilling with no reduction/processing	Yes	Moderate - Lost opportunity Cost	High	Low	Low	High	Moderate-Landfill caps vary Parish by Parish	Low-Potentially controversial

TABLE B.2, METALS

Definition: Primarily ferrous metals including metal roofing, white goods, junk autos, and miscellaneous ferrous scrap. Also includes non-ferrous metals such as copper wire.

RECOMMENDED BMP:

Objective: Segregate major items such as junk autos and appliances on TDSR site.

Recovery: Phase: Source separate all recyclable metals for separate collection from curb. Recover large metal items such as metal roofing, and appliances through processing of mixed debris. Store metals separately on TDSR. Process Ferrous and nonferrous metals for recycling.

Management Techniques	Option Feasible	Cost Feasibility	Capital Cost Feasibility	Debris Reduction Efficiency	Environmental Friendliness	Human Health & Safety	Current Availability of Resources & Markets	Public Acceptability
Source Separate for Recycling	Yes	High-Scrap value can pay costs of separation and processing	Moderate- Requires shredding & densification	High	High	Moderate: Requires worker health & safety (H&S) planning	High	High
Post Collection Separation at TDSR for recycling	Yes	Moderate- Higher processing costs than source separated	Moderate	High	High	Moderate: Requires worker H&S Planning	High	High
Landfilling with No Reduction/Processing	Yes	Moderate- Market revenue lost	High	N/A	Low	High	High	Low

Table B.3 Mixed Debris

Definition: Mixed debris. Consists of materials from all of the other disaster debris categories. Does not include rubbish or putrescibles, but may include many of the same materials, such as C&D debris, household items, mixed plastics, that are generated as debris during a disaster event.

Recommended BMP:

Objective: Divert as much as possible from this category. Reduce the volume of debris landfilled.

Recovery Phase: Where it is impractical to avoid creating mixed waste, strive to keep any material that could be separated into other components free from contaminants (i.e. putrescibles.) Deliver directly to landfill for removal efficiency or to TDSR sites for recovery and/or volume reduction. Process for segregation or recyclable materials (conveyor with sorting,) screen off fines, and grind for volume reduction. If air curtain incineration is feasible, process material to remove non-combustibles.

Management Techniques	Option Feasible	Cost Feasibility	Capital Cost Feasibility	Debris Reduction Efficiency	Environmental Friendliness	Human Health & Safety	Current Availability of Resources/Markets	Public Acceptability
Process for Recycling	Yes	Moderate	High	Moderate	High	Moderate	Moderate: For aggregate, OCC, metals, green waste	High
Processing for RDF	Yes	Moderate	Moderate	High	Moderate: Required Pollution Control	Moderate	High at H-power (if capability exists) Low elsewhere	Moderate
Source Separation for Recycling	Yes	Moderate	Moderate	Low	High	High	High: Depends on type and condition of products	High
Landfilling with No Reduction/Processing	Yes	Moderate	High	Low	Moderate	High	Moderate: Will Consume landfill capability	Moderate

Table B.4 WOODY C&D DEBRIS

Definition: Principally treated dimensional lumber and engineered wood products, frequently mixed with non-wood materials. Treated wood is mostly comprised of chromated-copper-arsenate (CCA) treated products, with some pentachlorophenol, creosote, etc.

RECOMMENDED BMP:

Objective: Minimize landfill space utilization. Treated wood is non-recyclable in most applications.

Response Phase: Post collection separation at TDSR for incineration.

Recovery Phase: Source separation for reuse and incineration. Post collection separation at TDSR for incineration. Salvage by positive sorting intact dimensional lumber. Production of fuel. Air regulations continue to tighten, even under emergency permits, regulators can be expected to closely examine emissions data.

Management Techniques	Option Feasible	Cost Feasibility	Capital Cost Feasibility	Debris Reduction Efficiency	Environmental Friendliness	Human Health & Safety	Current Availability of Resources & Markets	Public Acceptability
Source Separation for Recycling & Incineration of Controlled Facility	Yes	Moderate: Depends on structure type and percentage of treated wood	High (Low if new pollution control required)	High	Moderate	Moderate: Airborne toxins	Moderate	Moderate
Post collection Separation at TDSR Site for Incineration at Controlled Facility	Yes	Moderate: Involves labor and high-wear mechanics	Moderate: Heavy-duty sorting equipment required	High	Moderate: Emissions from treated wood	Moderate: Airborne toxins	Moderate	Moderate
Re-use/Salvage of Materials	Yes	High: Positive Sort	High	Moderate: Limited volume	High	High	Moderate	High
Shredding at TDSR Site and Landfill Disposal	Yes	Moderate	Moderate	Moderate	High	High	Moderate: Heavy grinders	High

Table B.5, ASPHALT ROOFING

Definition: Roofing waste consisting of residential asphalt roofing (3-tab shingle type,) commercial asphalt roofing and various non-asphalt roofing products in small percentages. Asphalt roofing assumed to include all residential roofing debris and only commercial asphalt roofing that is free of asbestos hazard. Asphalt roofing consists of fiberglass or plant fiber mat, asphalt and inert granular materials.

RECOMMENDED BMP:

Objective: Minimize landfill space utilization.

Response Phase: Post collection separation at TDSR for incineration.

Recovery Phase: Source separation for recycling. Post collection separation at TDSR for recycling.

Management Techniques	Option Feasible	Cost Feasibility	Capital Cost Feasibility	Debris Reduction Efficiency	Environmental Friendliness	Human Health & Safety	Current Availability of Resources/ Markets	Public Acceptability
Source Separation for Recycling	Yes	High: Fairly easy to isolate	High	High	High	High: Asbestos certified inspectors required	Moderate: Combine with aggregates for road base or paving mixture	Moderate
Post Collection Separation at TDSR Site for Recycling	Yes	Moderate: Involves labor and high-wear mechanics	Moderate: Heavy-duty sorting equipment	High	High	High: Asbestos certified inspectors required	Low: Combine with aggregates for road base or paving mixture	Moderate

Table B.6, GYPSUM

Definition: Old material is frequently limited to small broken pieces and large pieces that are still fastened to framed structures, and typically painted or otherwise laminated with surface treatments. Clean gypsum scrap free of contaminants is generated from reconstruction.

RECOMMENDED BMP:

Objective: Minimize landfill space utilization by recycling clean scrap from reconstruction.

Response Phase: Deliver to landfill with no reduction/processing, or storage and processing at a later time.

Recovery Phase: Source separation clean gypsum scrap, including only new material from reconstruction. For recycling with green waste. Landfill old scrap with no reduction processing.

Management Techniques	Option Feasible	Cost Feasibility	Capital Cost Feasibility	Debris Reduction Efficiency	Environmental Friendliness	Human Health & Safety	Current Availability of Resources/ Markets	Public Acceptability
Source Separation for Recycling	Yes: Clean scrap only	Moderate: Hand sorted	High	High	High	High	Moderate: Can be combined with green waste for composting	High
Post Collection Separation at TDSR Site for Recycling	No	Low: Pieces too small	N/A	High	Moderate	Moderate	Low: Not used for painted and contaminated scrap	High

Table B.7, PLASTIC SHEETING

Definition: Mixed grades of plastic sheeting used to cover roofs following storm event. Possible includes several resin types. When disposed, can be dirty and degraded by UV exposure.

RECOMMENDED BMP:

Objective: To reduce landfill space utilization, if possible, and to recover energy.

Response Phase: Not applicable.

Recovery Phase: If event is large and number of households using sheeting is large, material may be stored at TDSR, mixed with combustible debris or separated in covered drop boxes and incinerated in a facility with adequate pollution controls, such as the Waste to Energy Facility (WTEF.) Resident drop-off at TDSR is possible, otherwise material should be landfilled.

Management Techniques	Option Feasible	Cost Feasibility	Capital Cost Feasibility	Debris Reduction Efficiency	Environmental Friendliness	Human Health & Safety	Current Availability of Resources & Markets	Public Acceptability
Post Collection Storage at TDSR Site for Possible Incineration at WTEF (if capability exists.)	Yes	Moderate: When volumes are great. Labor intensive.	High	Moderate	High: Includes pollution control	High	High: Feasible to incinerate possible at the WTEF (if capability exists.)	High
Landfilling with No Reduction & Processing	Yes	High	High	Low	Moderate	High	N/A	Unknown
Mixed with Debris for Incineration in WTEF Boiler	Unknown	High	High	Moderate	Low	Low	High	High

Table B.8, PLASTIC WATER JUGS

Definition: Polyethylene water jugs. Most water supplied in liter bottles, resin unknown. Excludes large 5 or 10 gallon, blue-tinted water jugs, which cannot be recycled together with polyethylene plastics.

RECOMMENDED BMP:

Objective: Recycle where feasible locally.

Response Phase: Included in mixed debris for landfilling.

Recovery Phase: If even is large and amount of supplied water is large, jugs may be source separated and dropped off at TDSR site, stored in covered drop boxes. No separate collection. Material may be recycled locally, but also request bids from markets and plastic brokers. If bids are not cost-effective, incinerate at Waste to Energy Facility (WTEF.)

Management Techniques	Option Feasible	Cost Feasibility	Capital Cost Feasibility	Debris Reduction Efficiency	Environmental Friendliness	Human Health & Safety	Current Availability of Resources & Markets	Public Acceptability
Source Separation for Recycling	Yes	Moderate: Easily source separated & dropped off by users	High	Moderate: Hurricane Andrew reported 17 tons of water jugs recycled	High	High	High	High
Source Separation for Incineration at Waste to Energy Facility	Yes	Moderate: Easily source separated & dropped off by users	High	Moderate	Moderate	High	High	Unknown

Table B.9, AGGREGATE

Definition: Mixed aggregated including rubble, masonry, paving material, and concrete components typically include steel-reinforcement. Paving materials include asphalt, often mixed with some dirt and rock. Masonry materials include bricks, concrete masonry units (CMUs) and various roofing tiles.

RECOMMENDED BMP:

Objective: To reduce transportation costs, utilize processed material in reconstruction activity, and minimize landfill space utilization.

Response Phase: Source separate for direct transportation to pre-designated quarry sites for processing. Resident drop-off (non-commercial loads) at TDSR. Some storage of commercial loads at TDSR may be necessary during response phase.

Recovery Phase: Source separate for direct transportation to pre-designated quarry sites for processing. TDSRs could be designated to receive contractor and commercial loads at Parish's option and processed with a mauler for use as aggregate. Resident drop-off (non-commercial loads) at TDSR. Salvage network for certain brick masonry products should be established.

Management Techniques	Option Feasible	Cost Feasibility	Capital Cost Feasibility	Debris Reduction Efficiency	Environmental Friendliness	Human Health & Safety	Current Availability of Resources & Markets	Public Acceptability
Source Separation for Recycling	Yes	High: Can best minimize costs by diverting	High: Must add process equipment	Moderate: No major reduction in volume	High	High	High: Several quarries already have basic processing equipment and market channels for crushed aggregated products	High
Post Collection Separation at TDSR Site for Recycling	Yes	Moderate: Involves labor and high-wear mechanics	Moderate: Heavy-duty sorting equipment	Moderate	High	High	Low: Requires a complete C&D sorting line with picking and trommels	High
Re-Use/Salvage of Materials	Yes	High: Positive sort	High	Moderate	High	Low	High: Possible direct sales for TDSR sited	High
Landfilling with No Reduction/Processing	Yes	Moderate: High Collection Costs	High	N/A	Moderate	High	N/A	Unknown

Table B.10, HOUSEHOLD FURNISHINGS AND BELONGINGS

Definitions: Furniture, mattresses, carpets, textiles, etc.

RECOMMENDED BMPS:

Objective: Household furnishings disposed of after a disaster events are not recyclable due to bulk and contamination. The primary processing objective for these types of materials is to reduce their volume prior to loading onto trucks headed to the landfill and to minimize the volume of landfill space that they occupy.

Response Phase: Household furnishings to be delivered to the TDSR sites and stockpiled separately.

Recovery Phase: Household furnishings to be delivered to the TDSR as buildings are demolished/rehabilitated and household furnishings replaced. Bulky materials should be reduced in volume at the TDSR sites prior to hauling and disposal at the landfill.

Management Techniques	Option Feasible	Cost Feasibility	Capital Cost Feasibility	Debris Reduction Efficiency	Environmental Friendliness	Human Health & Safety	Current Availability of Resources/Markets	Public Acceptability
Separation, Crushing at TDSR site & Landfill Disposal	Yes	High	High	Moderate	High	High	High	High
Source Separation for Recycling	No						Low	
Shredding at TDSR Site and Landfill Disposal	Yes	Moderate	Moderate	Moderate	High	High	Moderate: Heavy duty grinders required	High

Table B.11, HOUSEHOLD HAZARDOUS WASTE

Definition: Household hazardous waste (HHW) includes products commonly used in the home that display one or more of the following characteristics: Ignitability, corrosivity, reactivity or toxicity. Examples include batteries, motor oil, automobile products, pain and pain-related products, household cleaners and drain openers, swimming pool chemicals, pesticides and herbicides.

RECOMMENDED BMPS:

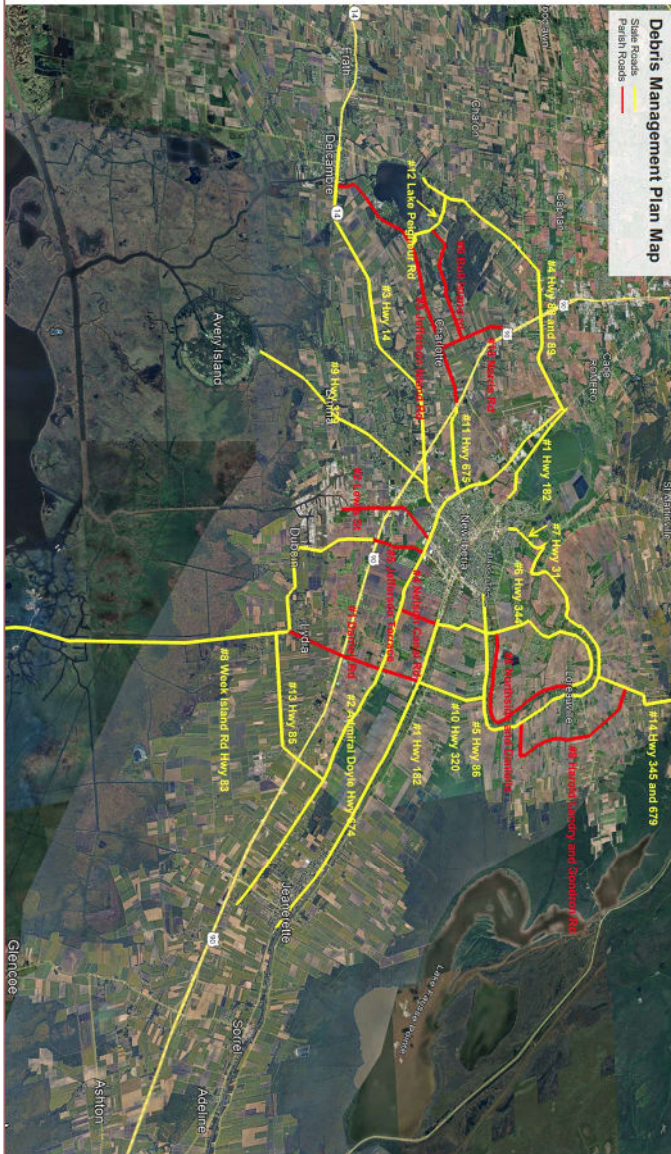
Objective: Reduce the potential for these materials to threaten human health and/or safety, or the environment.

Respond Phase: Where practical, segregate HHW from other debris. Inspect HHW product containers to confirm their integrity. If necessary, place damaged contained in plastic buckets, tubs or garden bags.

Recovery Phase: Direct residents to bring HHW to collection events and NOT set it out at the curb. Minimize HHW coming to TDSR sites. Iberia Parish Government has indicated in their debris collection contract that the primary debris collection contractor is responsible for the collection and disposal of all HHW according to State and Federal law using only trained, licensed individuals.

Management Techniques	Option Feasible	Cost Feasibility	Capital Cost Feasibility	Debris Reduction Efficiency	Environmental Friendliness	Human Health & Safety	Current Availability of Resources & Markets	Public Acceptability
Separate from Debris and Store HHW at TDSR to Process by Qualified Contractor for Disposal.	Yes	Moderate: Cost similar to conventional management practice	High: Low capital cost for materials	Low HHW is small art of waste stream	High	Moderate: Some risk involved, but high if not properly managed	High: Contractors already under contract	High
HHW Neighborhood Collection Events	Yes	Moderate to Low: Events are expensive	Moderate: Contractor will supply equipment	Low	High	Moderate: Some risk involved, but high if not properly managed	High: Contractors available	High
Inspection of Structures for Hazardous Materials prior to Demolition	Yes	Moderate: Need experienced contractor	Moderate: Contractor will supply equipment	Low	High	Moderate: Some risk involved, but high if not properly managed	High: Contractors available	Low
Landfilling with No Segregation	No	High	High	N/A	Low: Identified HHW not in original container	Low: HHW is a threat in which citizens are aware.	N/A	Low

Annex C-Major Routes for First Push:



Commented [BM5]: Please validate whether state or parish

Parish Roads colored green

Darnell Road
 Avery Island Road
 Lewis Street
 3212
 Admiral Doyle Drive - ARA
 Northside road
 Hubertville

State roads red

LA-87 Parish
 LA-86
 671 / 668

Commented [NH6R5]: Please check list I sent this morning. It lists additional hwys and roads.

Commented [NH7R5]:

Annex D-Disaster Debris Curbside Placement

Separating Your Debris
Debris should be placed curbside, without blocking the roadway or storm drains.

NO PICKUP ZONE
Any debris placed from the sidewalk toward your property will not be picked up.

DEBRIS SEPARATION
Separate debris into the six categories shown below.

DO NOT STACK OR LEAN
Placing debris near or on trees, poles, or other structures makes removal difficult. This includes fire hydrants and meters.

UNSURE WHERE TO PLACE DEBRIS?
If you don't have a sidewalk, ditch, or utility line in front of your house, place debris at the edge of your property before the curb.

HOUSEHOLD TRASH
Normal household trash and bagged debris of any kind will not be picked up as part of debris collection. This will be collected on your normal garbage removal schedule.

VEGETATIVE DEBRIS

- Branches
- Limbs
- Logs
- Plants
- Leaves (unbagged)

CONSTRUCTION & DEMOLITION DEBRIS
Materials that are an integral part of the structure such as:

- Sheetrock/Drywall
- Plaster
- Lumber
- Plumbing
- Insulation
- Brick

*C&D debris does not include carpet, furniture, mattresses, and regulated asbestos containing material.

WHITE GOODS

- Air Conditioners
- Dishwashers
- Freezers
- Refrigerators
- Stoves
- Washers & Dryers
- Water Heaters

ELECTRONICS

- Computers
- Radios
- Televisions
- Devices with a cord

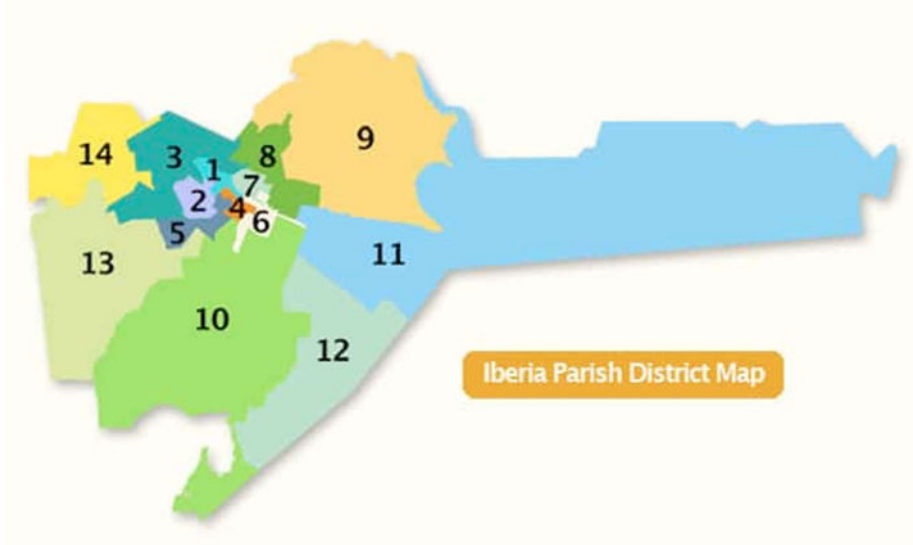
HOUSEHOLD HAZARDOUS WASTE

- Cleaning Supplies
- Batteries
- Lawn Chemicals
- Oil
- Paint & Stain
- Pesticides
- Vehicle Fluids

WASTE PERMITS DIVISION
FOR MORE INFORMATION CALL
225.364.7901

DEQ
LOUISIANA

Annex E-Debris Management Sectors



Annex F-Right of Entry Form

ROE No. _____	PRIVATE CONTRACTOR DEBRIS REMOVAL LOUISIANA 2021 FEMA-DR-4611-LA Address: Tax ID Block/Lot:

**RIGHT OF ENTRY (“ROE”) ONTO PRIVATE PROPERTY FOR DEBRIS REMOVAL AND/OR
DEMOLITION DISASTER ASSISTANCE HURRICANE IDA (FEMA-DR-4611-LA)**

Ownership Interest’s Grant of Right of Entry for Debris Removal and/or
Demolition Activities

The undersigned hereby certifies he/she/they/ is/are (check):

_____ Property Owner(s) with authority to grant access to the property at
(Address)_____.

_____ The authorized agent of the Property Owner at above address.

The Property Owner(s)/agent authorize(s) the Town/City/Parish of _____, the State of Louisiana and the United States of America, their respective agents, successors and assigns, contractors and subcontractors (collectively, the “Governments/Contractors”) to have the right of access and to enter the property above specified for purposes of performing debris removal as it is a public health and safety threat and/or for demolishing structures local authorities have determined through due process to be unsafe directly because of the declared major disaster, **Hurricane XXX, FEMA-DR-XXXX-LA.**

Government Not Obligated; No Expense Except For Insurance Proceeds

The Property Owner(s)/agent understand(s) that this Right of Entry does not obligate the Governments/Contractors to perform debris removal or demolition. Governments/Contractors will access the property under this ROE if the work has been determined necessary in accordance with Federal, State, or local regulations. The Property Owner(s) will not be charged for the work conducted by Governments/Contractors. However, if the Property Owner(s) receive(s) insurance

proceeds or compensation from other sources for debris removal or demolition, the Property Owner's(s') obligation is set out in the section below, entitled "Avoidance of Duplication of Benefits: Reporting Debris Removal/Demolition Money Received"

Government Indemnified and Held Harmless

The Property Owner(s)/agent agrees to indemnify and hold harmless the Governments/Contractors for any damage of any type whatsoever to the above described property or to personal property and fixtures situated thereon, or for bodily injury or death to persons on the property, and hereby releases, discharges and waives any and all actions, either legal or equitable, which the Property Owner(s) has/have, or ever might or may have, by reason of any action taken by Governments/Contractors to remove debris or demolish unsafe structures.

Avoidance of Duplication of Benefits: Reporting Debris Removal/Demolition Money Received

Property Owner(s)/agent has/have an obligation to file an insurance claim if coverage is available. Property Owner(s)/agent understand(s) and acknowledge(s) that receipt of compensation or reimbursement for performance of the aforementioned activities from any source, including Small Business Administration, private insurance, an individual and family grant program or any other public or private assistance program could constitute a duplication of benefits prohibited by federal law. If the Property Owner(s)/agent receive(s) any compensation from any source for debris removal or demolition activities on this property, the Property Owner(s)/agent will report it to the Town/City/Parish Department of _____ at (address & phone) _____.

Release of Insurance Information

If insured, the Property Owner(s)/agent authorize(s) its/their insurer, (Company) _____, to release information relating to coverage and payments for debris removal/demolition activities (Claim # _____, Policy # _____) to the Town/City/Parish identified herein and/or to the State of Louisiana.

Acknowledgment of Prohibition on Fraud, Intentional Misstatements

The Property Owner(s)/agent understand(s) that an individual who fraudulently or willfully misstates any fact in connection with this agreement may be subject to penalties under state and federal law,

including civil penalties, imprisonment for not more than five years, or both, as provided under 18 USC § 1001.

Signature(s). Witnesses Only if Demolition

Property Owner(s) or Authorized Agent and Mortgage/Lien Holder(s)

For the considerations and purposes set forth herein, I/we hereby set my/our hand(s) and seal(s) this _____ day of _____, 202X.

Witness 1 _____

Witness 2 _____

Property Owner(s)/Authorized Agent:

Sign _____

Print: Property Owner(s)/Authorized Agent:

Current Address and Telephone No.:

Privacy Act Statement: The Property Owner/ Owner's Authorized Agent acknowledge(s) that information submitted will be shared with other government agencies, federal and non-federal, and contractors, their subcontractors and employees but solely for purposes of disaster relief management to meet the objectives of this Right of Entry. This form is signed to allow access to perform debris removal and/or demolition operations on the above-mentioned property, to authorize the release of insurance policy/claim information and to assure notification of any lien holder of demolition.

Annex G-PPDR & Demolition Eligibility Checklist

Commented [NH8]: Before you get impressed, I stole this from an Army Corp of Engineers document.

ELIGIBLE DEBRIS FOR PPDR PROGRAM

DEBRIS TYPE	EXAMPLES	NOTES
Hazardous Tree Debris	Limbs, leaning trees, hanging branches, uprooted stumps, shrubs, yard trimmings, etc.	Must be disaster-generated from the disaster being worked and must pose a safety hazard.
Mixed Debris	Combination of vegetative and structural debris	Includes mixed storm debris piles requiring separation for disposal.
Soil and Sediment	Mud, dirt, rock, sand, silt	Eligible only if not associated with a landslide, or debris from river flooding.
Titled Property	Campers, motor vehicles	Must be properly adjudicated for disposal before removal is authorized.
Construction & Demolition Debris (C&D)	Owner-removed drywall, lumber, insulation, roofing, broken furniture, etc. Damaged outbuildings, sheds, small structures	Structures must have been destroyed by the storm; utilities must be disconnected. Excludes pre-existing renovations or demolition debris.
Permanent Structures with utilities	Homes, garages, sheds, commercial buildings	May be eligible for demolition with approval from certified parish or state officials.
Other Debris	Debris in driveways, yards, pathways, or other maintained areas	Must pose a threat to life or safety; located on private or commercial property
White Goods	Refrigerators, washers, dryers, stoves dishwashers	Must be emptied of food and hazardous materials. PPDR can remove freon.
Household Hazardous Waste (HHW)	Paint, cleaning products, batteries, pesticides	Please dispose of through Parish channels, if available.

NON-ELIGIBLE DEBRIS FOR PPDR PROGRAM

DEBRIS TYPE	EXAMPLES	NOTES
Remodeling/Contractor Debris	Contractor generated sheetrock, roofing, debris, flooring, carpet	Contractors are responsible for removing their own construction debris.
On Vacant/Unmaintained Land	Debris on vacant lots or unmaintained areas	Land that is unimproved, unused or unmaintained is not eligible.
Agricultural Lands	Debris in fields, pastures, croplands	Land primarily used for crops or livestock is not eligible.
Unmaintained Trees	Fallen trees in forests or woodlands	Downed trees located outside of maintained areas are not eligible.

WHAT HOMEOWNERS/LANDOWNERS SHOULD KNOW

Separate Debris by Type:

- Pile vegetative debris separately from C&D debris.
- Keep white goods and E-waste aside for special handling.
- Hazardous waste should not be mixed with other debris piles.
- Salvage any valuables, furniture, or personal items from debris piles before crews arrive.

Avoid Placing Debris Nearby:

- Fire hydrants, mailboxes, utility poles or under power lines, as this can slow removal and create hazards.
- Sewer grates or storm drains, which can block drainage and cause flooding.

No Contractor Debris:

- Debris from contractor-led repairs or remodeling is not eligible for PPDR.
- Contractors are responsible for removing their own construction debris.

Key Rules & Tips:

- Only disaster-related debris is eligible for removal.
- Debris most pose an immediate threat to life, public health or safety to qualify for PPDR.
- Household garbage is not eligible for pickup through PPDR.
- Some debris, such as asbestos, mold or chemicals may require special handling – check with local authorities.