



# 2025 IBERIA PARISH HURRICANE PREPAREDNESS MEETING

M. Larry Richard, Iberia Parish President  
Brandon Migues, Director of Homeland Security and Emergency Preparedness



M. LARRY RICHARD  
PARISH PRESIDENT

# Agenda

- Opening Remarks (Parish President / OHSEP)
  - Introductions
- Doug Cramer, National Weather Service, Lake Charles
- Iberia Parish Government Preparedness Updates



M. LARRY RICHARD  
PARISH PRESIDENT

# Opening Remarks

Iberia Parish Government welcomes you to our 2025 Annual Hurricane Preparedness Meeting. The focus of today will revolve around the current Hurricane Season forecast, Emergency Preparedness updates, and the follow-on requirements to be better prepared as a Parish for an all-hazards incident. It is important that all Municipal, Parish, State, faith based and volunteer agencies work closely together to better serve and protect the citizens of Iberia Parish. It has been several years since Iberia Parish has been directly affected by a damaging hurricane as memories fade of Hurricanes Andrew, Katrina, Rita, Gustav, Ike and Barry. Our government, procedures, and leadership have all changed since we responded to a major hurricane and our preparedness responsibilities require us to continually revisit our plans and make the appropriate adjustments to facilitate a better response.



M. LARRY RICHARD  
PARISH PRESIDENT


# Doug Cramer National Weather Service Lake Charles

**NATIONAL WEATHER SERVICE**  
NATIONAL OCEANIC AND ATMOSPHERIC ADMINISTRATION

HOME FORECAST PAST WEATHER SAFETY INFORMATION EDUCATION NEWS SEARCH ABOUT


Local forecast by "City, St" or ZIP code  
Enter location ...  [Location Help](#)

**MY FORECAST**  
Lake Charles LA

  
Mostly Cloudy and Windy

**83°F**  
28°C [Get Detailed info](#)

**This Afternoon**  
  
Partly Sunny and Windy  
High: 83°F

**Tonight**  
  
Mostly Cloudy  
Low: 73°F [change location](#)

**News Headlines**  
• [Click here to view Significant Weather Events across Southwest Louisiana & Southeast Texas](#)

**NWS Lake Charles**  
[Weather.gov](#) > Lake Charles, LA

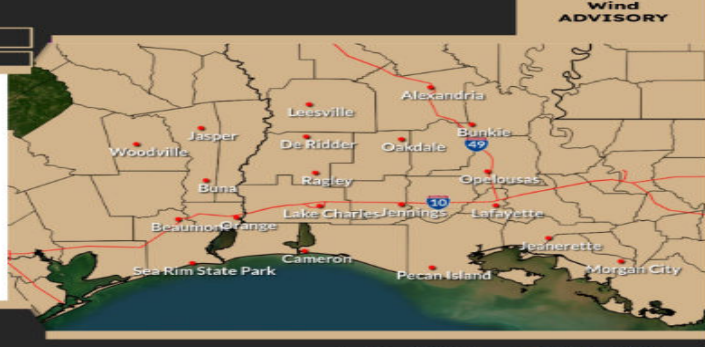
Lake Charles, LA  
Weather Forecast Office

Current Hazards Current Conditions Radar Forecasts Rivers and Lakes Climate and Past Weather Local Programs

Wind Advisory Coastal Flooding Today Small Craft Advisory Saturday Severe Risk Saturday Excessive Rainfall Seven Day Outlook

**Wind Advisory**  
In Effect through 7 PM Wednesday  
Then again 7 AM to 7 PM Thursday

- All of southeast Texas, central and southwest Louisiana
- South winds 20 to 30 mph with gusts to 40 mph.
- LIGHTWEIGHT OBJECTS BLOWN AROUND
- SECURE LOOSE OUTDOOR OBJECTS
- DIFFICULT TRAVEL



[weather.gov/LakeCharles](#)  
National Weather Service - Lake Charles, LA  
Follow: X @NWSLakeCharles

Updated: Wed Apr 02, 2025 9:27 AM





Elevated southerly winds will continue through today, becoming increasingly gusty by the afternoon. Sustained speeds between 20 and 30 mph can be expected with gusts up to 40 mph at times. The windy conditions will continue on Thursday with south winds between 20 and 25 mph with gusts to 35 mph.

[Hide Caption](#)



M. LARRY RICHARD  
PARISH PRESIDENT

# Doug Cramer National Weather Service Lake Charles

| Forecast Group   | Forecast Date | 'Named' Storms | Category 1-2 Hurricanes | Category 3-5 Hurricanes |
|--|---------------|----------------|-------------------------|-------------------------|
|  Colorado State University  | April 3       | 17             | 9                       | 4                       |
|  AccuWeather  | March 26      | 13 - 18        | 7 - 10                  | 3 - 5                   |
|  WEATHERBELL<br>ANALYTICS LLC  | February 27   | 15 - 19        | 7 - 9                   | 2 - 3                   |
|  NOAA<br>NATIONAL OCEANOGRAPHIC AND ATMOSPHERIC ADMINISTRATION<br>U.S. DEPARTMENT OF COMMERCE | 30-yr Normals | 14             | 7                       | 3                       |



M. LARRY RICHARD  
PARISH PRESIDENT

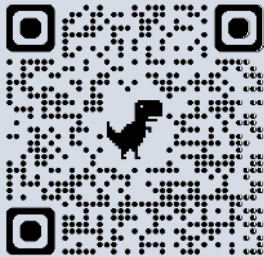
# Iberia Parish Government Preparedness

## Prepare / Prevent

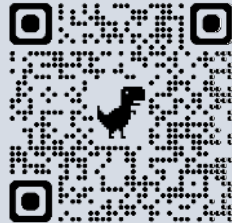
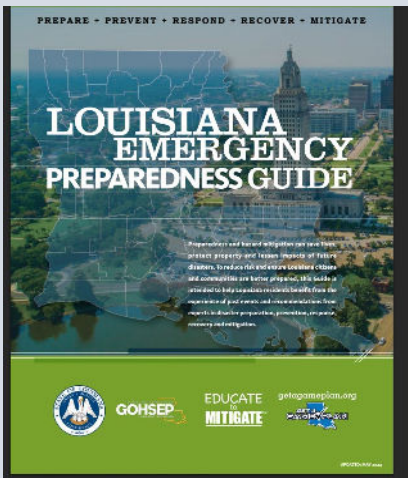


M. LARRY RICHARD  
PARISH PRESIDENT

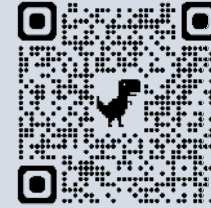
# Iberia Parish Government Preparedness Planning Tools / Resources



<https://gohsep.la.gov/media/saakdqt/emergency-y-guide-2024.pdf>



<https://www.getagameplan.org/resources/get-a-game-plan-app/>

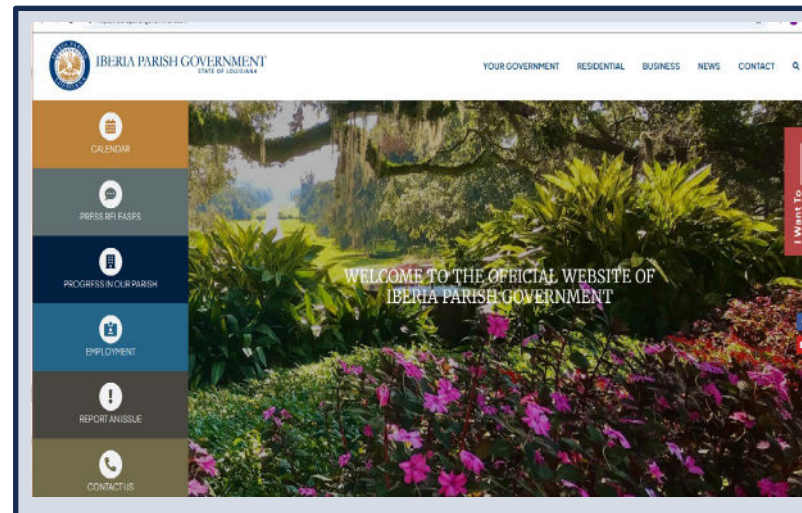


Iberia Parish Office of Homeland  
Security & Emergency  
Preparedness

<https://www.facebook.com/profile.php?id=61559510827273>



<https://labeoc.org/>



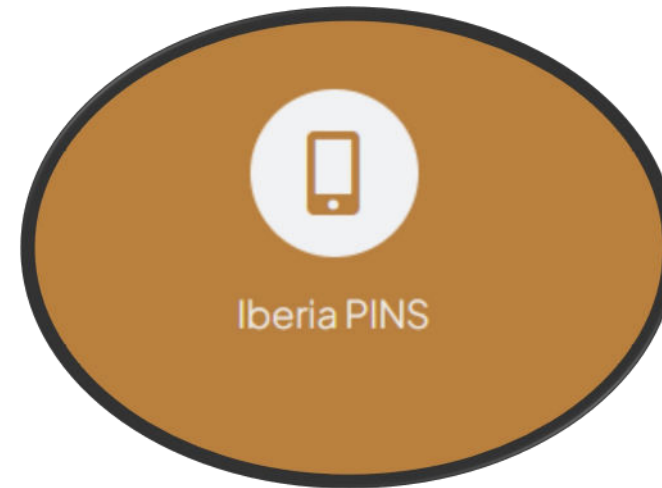
<https://iberiaparishgovernment.com/>



M. LARRY RICHARD  
PARISH PRESIDENT

# Iberia Parish Government Preparedness Iberia PINs (RAVE)

You can sign up for emergency and informational notifications from Iberia Parish Government? You choose what notifications to receive and when you want to receive them.



You can sign up for Iberia PINS at

[Log In - Smhttps://www.smart911.com/smart911/ref/login.action?pa=IberiaParishart911](https://www.smart911.com/smart911/ref/login.action?pa=IberiaParishart911)

or by scrolling to the bottom of the Iberia Parish Government website and clicking on the gold button



M. LARRY RICHARD  
PARISH PRESIDENT

# Iberia Parish Government Preparedness Emergency Operations Plan

The Iberia Parish Emergency Operations Plan (EOP) remains the governing document as to how Iberia Parish responds to all Hazard events. This document has been updated to reflect various encountered emergencies and lessons learned throughout the years, and new state and FEMA guidance and procedures. The Plan is under revision

Please review the draft, updated EOP at:

<https://iberiaparishgovernment.com/wp-content/uploads/2024-Emergency-Operations-Plan.pdf>



\*\*The 2025 version is in draft form



M. LARRY RICHARD  
PARISH PRESIDENT

# Iberia Parish Government Preparedness Emergency Support Functions

Emergency Support Functions formalize Iberia Parishes emergency response capabilities, and provide a clear framework for managing complex disaster situations. The Emergency Support Function implementation will aid the Parish in streamlining its coordination for emergencies, provide for better communication between external agencies, and allows for a more effective response which in turn will assist victims and communities in recovery during the aftermath of an all-hazard incident.



M. LARRY RICHARD  
PARISH PRESIDENT

# Iberia Parish Government Preparedness Emergency Support Functions



- **ESF 1-Transportation** (Darrel Manning / Mo Songy)
  - Evacuation + re-entry
  - Transportation



- **ESF 2- Communications** (Lance Provost-Michael Prejean)
  - Emergency communications restoration
  - Coordination of Federal/State/Local communication resources
  - Cyber Response



- **ESF 3- Public Works & Eng** (Jean Romero)
  - Debris and wreckage removal
  - Roadway maintenance



- **ESF 4- Firefighting** (Chief Guy Bonin)
  - Firefighting structural, forest, rural and wooded area fires
  - Fire investigations.



- **ESF 5- Emergency Mgmt** (Brandon Migues)
  - EMAC
  - Multi-Agency Coordination
  - Generator support
  - WEBEOC management / Task Tracker / Req tracker
  - Mosquito Abatement



- **ESF 6- Mass Care** (Khristina Francis)
  - Sheltering operations
  - Mass feeding
  - Long/short term housing
  - VOAD



- **ESF 7- Resources Support** (Michael Broussard)
  - Emergency Fuel
  - Contracting / Purchasing



- **ESF 8- Health & Medical** (Carol Broussard)
  - Medical and health needs
  - Special needs shelters
  - Ambulances



# Iberia Parish Government Preparedness Emergency Support Functions



- **ESF 9- Search & Rescue (IPSO)**
  - Search and Rescue (SAR)
  - Water Rescue



- **ESF 10- Hazardous Materials (Chief Guy Bonin)**
  - HAZMAT



- **ESF 11- Agriculture (Blair Hebert / Amanda Istre)**
  - Animal response and Relief
  - Pet evacuation and sheltering
  - Agricultural needs



- **ESF 12- Energy (Brad Cradeur)**
  - Oil and Gas pipelines.
  - Utility Services
  - Drinking water
  - Sewerage



- **ESF 13- Public Safety & Security (IPSO)**
  - Security
  - Traffic Control
  - Public safety and law enforcement
  - Prison evacuations



- **ESF 14- Community Recovery, Mitigation and Economic Stabilization ( Bo Belanger )**
  - Disaster Recovery
  - Preliminary Damage Assessments (PDAs) for Public Assistance and Individual Assistance
  - Donations Management
  - VOAD Management



- **ESF 15- External Affairs (Josepha Morgan)**
  - Media and community relations



- **ESF 16- Defense Support to Civilian Agencies (LANG)**
  - Support all ESF activities



# Iberia Parish Government Preparedness 120 H-Hour Pre-Storm

M. LARRY RICHARD  
PARISH PRESIDENT

- (H-120) Make Initial Contact with COWM – P2P – Hotel rooms for liaisons
- Make Contact with Debris Monitoring and Pickup contractors
- Parish President Evacuation discussions begin
- Begin GOHSEP/NWS conf calls
- Begin Looking at Sheltering plan
- Make contact with ARC to ascertain support
- Meet with IPG finance – tracking expenditures / payroll
- Check fuel in both generators
- Make contact with Axis
- PINs initial post – citizen preparations
- Request use of LDH Health Unit Nurse
- Contact Independent living managers & Council on Aging & Homeless Shelter
- Begin Public information campaign

- (H-72) Stage evacuation – transportation – shelter assets – School busses and drivers on standby
- Social media Update – 232 Help – and News media of new developments
- Contact all municipalities – what do they need
- Contact Food-N-Fun related to fuel availability
- Place Debris contractor and Monitor on Standby
- (H-60) Decide upon and announce evacuations – notify GOHSEP via WEBEOC – No last resort shelter – surge or unstable homes evacuate
- Check with IMC related to evacuation – notify LDH
- Charter bus determination and pet transport in WEBEOC.
- Alert IPSB and CERT – School buses and Westgate related to evacuations
- Determine EOC activation level
- Cancel hotel rooms with COWM if no mandatory evac
- Activate PPP teams

- (H-24) Social media Update – 232 Help – and News media of new developments
- Request A/C activation 24/7
- Phone bank staffing begins
- Evaluate PPP evacuation numbers remaining – how long
- (H-18) Continue monitoring PPP Operations – can they make it to WM before H-Hour
- (H-6) Ensure all ESF staff including CERT are in safe locations
- Encourage evacuations again for vulnerable areas or structures – no shelter of last resort
- (H-1) Advise LEO agencies to advise motorists to seek shelter
- Update WEBEOC
- Continue NWS, GOHSEP conf calls

H-120

H-108 to 96

H-72 to 60

H-48-30

H-24

H-Hour

- (H-108) Emergency Declaration Discussion with Parish President
- Social media Update – 232 Help – and News media of new developments
- (H-96) Test all Comms (PSAP)
- Alert Staff via RAVE – Activate EOC on limited schedule
- Contact Axis – generator hookup
- Make Contact with State supporting Agency LNOs
- ESF-6 begins contacting post-storm sheltering locations
- Begin review of Transport and Evacuations plan with ESF-1/ESF-6 staff to include CERT
- Validate assisted living plans – what do they need
- Contact IPSB – Westgate – School Buses
- Begin Requesting LNO's (DOTD/DCFS/LANG/LSP)
- Develop EOC battle rhythm

- (H-48) Social media Update – 232 Help – and News media of new developments
- Review Storm Surge warnings (Track and Strength – Re-evaluate evac area)
- Req paratransit and SMILE vans at EOC x 2 with a driver and assistant driver
- Begin PCP operations, PPP Operations, School Bus Operations (Submit hourly report on # evacuees and Pets registered)
- Contact all municipalities – what do they need
- Continue evac operations engaging media and social media for citizen evacuation (CTNS-Self evacuees)
- Check in with LEO about evac routes
- (H-36) Stage SAR reception center
- Complete PPP Operations
- (H-30) Update Parish President and elected officials
- Update WEBEOC
- Continue NWS, GOHSEP conf calls

- H-HOUR
- First Responders sheltering in place
- EOC Staff monitors storm and damage reports
- Continue NWS, GOHSEP conf calls
- SAFE ROOM OPERATIONS COMMENCE



M. LARRY RICHARD  
PARISH PRESIDENT

# Iberia Parish Government Preparedness

## Rapid intensification

What is Rapid Intensification?

The [National Hurricane Center \(NOAA\)](#) defines rapid intensification as a 30 knot (approximately 35 mph) increase in maximum sustained winds within a 24-hour period.

Examples of Recent Hurricanes with Rapid Intensification:

- **Hurricane Ian (2022):** Went from having roughly 115-mph to 160-mph maximum sustained winds in 24 hours.
- **Hurricane Ida (2021):** Experienced a 65-mph jump in maximum sustained winds in 24 hours.
- **Hurricane Helene (2024):** Experienced a rapid intensification, with maximum sustained wind speeds intensifying from 45 mph to 80 mph in 24 hours.
- **Hurricane Milton (2024):** Rapidly intensified into a Category 5 hurricane.
- **Hurricane Beryl (2024):** Experienced rapid intensification and Category 5 winds early in the season, likely due to unusually warm waters.

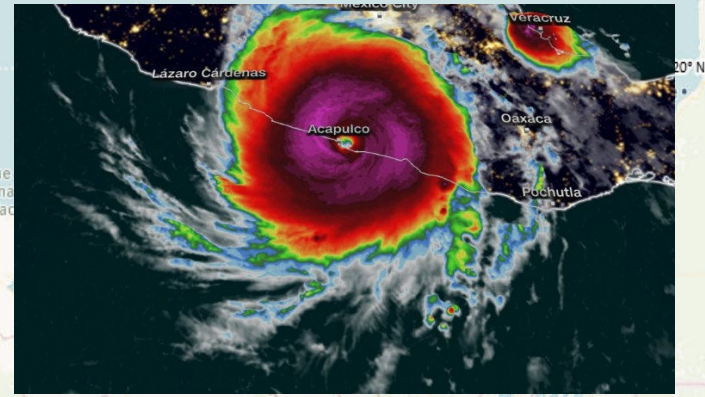
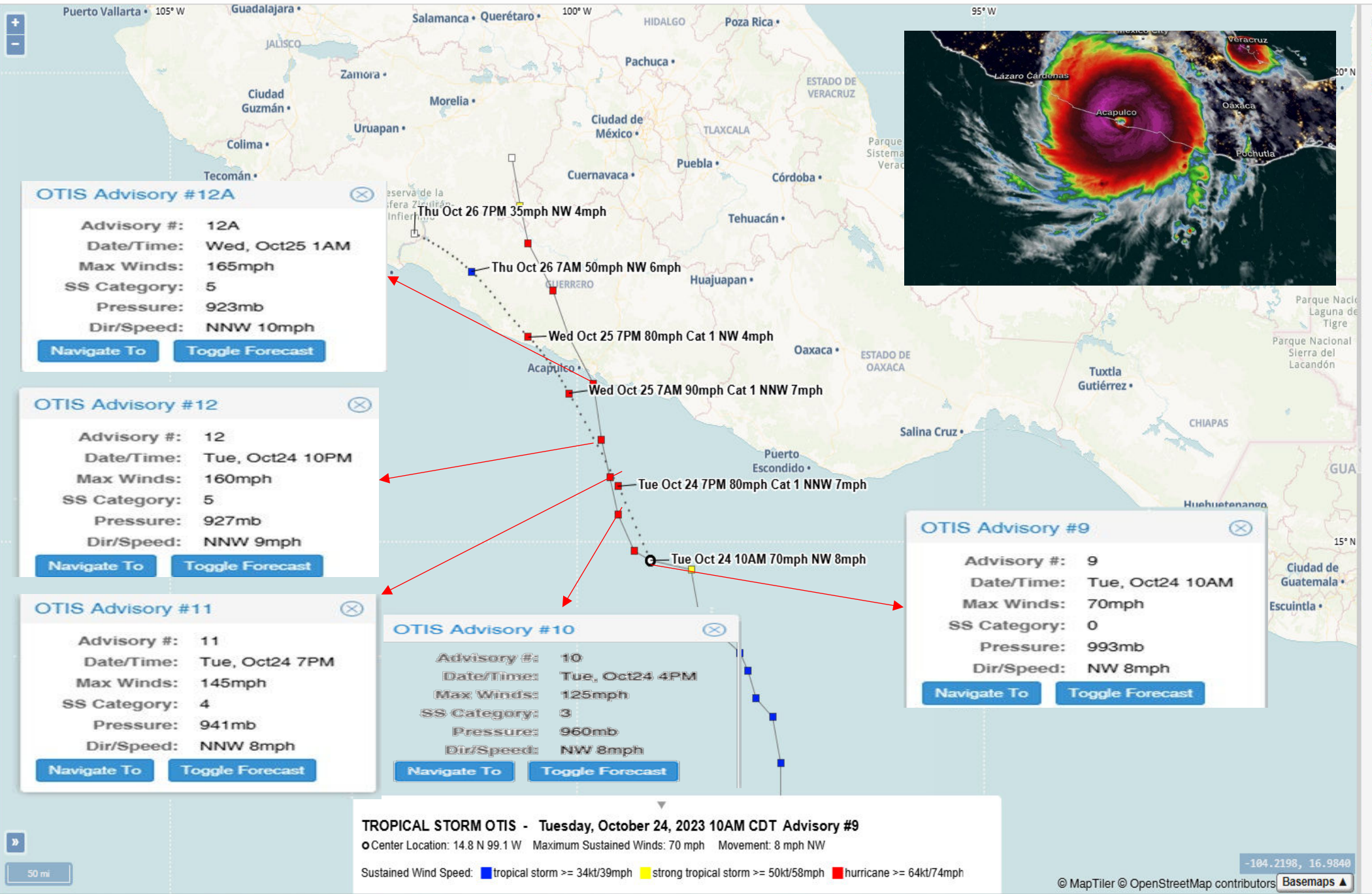
### Map Layers

Storms Conditions Resources

Filter Storms

| Name                                     | Basin |
|--|-------|
| <input type="checkbox"/> LAN             | WP    |
| <input type="checkbox"/> LEE             | AL    |
| <input type="checkbox"/> LIDIA           | EP    |
| <input type="checkbox"/> LOLA            | SP    |
| <input type="checkbox"/> MAL             | SP    |
| <input type="checkbox"/> MARG...         | AL    |
| <input type="checkbox"/> MAWAR           | WP    |
| <input type="checkbox"/> MAX             | EP    |
| <input type="checkbox"/> MICH...         | IB    |
| <input type="checkbox"/> MIDHILI         | IB    |
| <input type="checkbox"/> MOCHA           | IB    |
| <input type="checkbox"/> NIGEL           | AL    |
| <input type="checkbox"/> NORMA           | EP    |
| <input type="checkbox"/> OPHE...         | AL    |
| <input checked="" type="checkbox"/> OTIS | EP    |
| <input type="checkbox"/> PHILI...        | AL    |
| <input type="checkbox"/> PILAR           | EP    |

- Tropical Weather Outlook
- Text Advisories
- Reports
- Storm Surge
- Evacuation Timing
- Training
- Storm Simulator



Side Panel



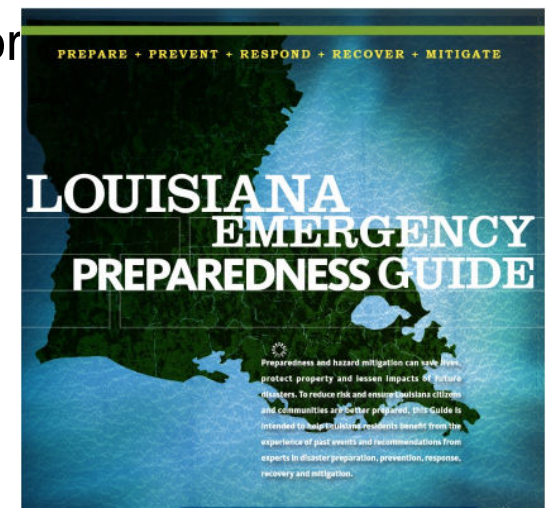
M. LARRY RICHARD  
PARISH PRESIDENT

# Iberia Parish Government Preparedness Personal & Business Plans

## ➤ Your Responsibilities:

- Make a plan – when to leave, where to go, what to take
- Assess how your situation has changed since you last experienced a storm
- Consider your special needs – prescriptions, medical equipment, elderly, pets
- Keep your gas tanks filled (gas stations have run out pre-storm)
- Consider creating an H-hour sequence for your family or business
- Be prepared for extended periods without electricity post storm

- Louisiana Emergency Preparedness Guide
- [Getagameplan.org](http://Getagameplan.org)
- [www.ready.gov](http://www.ready.gov)





M. LARRY RICHARD  
PARISH PRESIDENT

# Iberia Parish Government Preparedness Personal & Business Plans

Iberia Parish has no plans to open a public shelter pre-storm. The severity of the recent hurricanes have highlighted the inadequate number of hotel rooms and facilities within the Parish for a massive evacuation. Residents should have alternate plans for sheltering should no hotel rooms be available.





M. LARRY RICHARD  
PARISH PRESIDENT

# Iberia Parish Evacuation Center Background

- Iberia Parish Government will provide a means of evacuation in the event a mandatory evacuation is called for portions of Iberia Parish. The decision to evacuate the Parish takes into account many variables such as wind, storm surge predictions, time of day, population affected, speed & intensity of the storm, and surrounding Parish actions. The location of the evacuation point must be conducive to allow for both Critical Transportation Needs (CTNS) and Medical Needs (MNS) evacuations.
- In order to facilitate the efficient evacuation of the residents the Iberia Parish Government has entered into a Cooperative Endeavor Agreement with the Iberia Parish School board for the utilization of Westgate High School Gym and School buses.



M. LARRY RICHARD  
PARISH PRESIDENT

# Iberia Parish Government Preparedness Personal & Business Plans

- Check on your special needs neighbors. See if they need help securing their homes, getting supplies or getting assistance in evacuating.
- There are people that will refuse to evacuate. If you know of a person with special needs that has not evacuated, please notify the Emergency Management Office with their name, address and a phone number. This will allow us to identify the people that need to be checked on post storm.
- We encourage faith-based organizations, civic organizations and elected officials to check on the people in their area both pre-storm and post-storm to ensure that they are safe and have the needed supplies. (Ensure they have enough medications to last for at least 5 to 7 days.)



M. LARRY RICHARD  
PARISH PRESIDENT

# Iberia Parish Government Preparedness State Resource Expectations

- No prepositioning of fuel
- No prepositioning of generators
- The expectation is the first 72hrs post storm the Parish is self sustaining
- Requests for resources go through the Parish OHSEP and imputed into the system of record for requesting resources, WEBEOC



M. LARRY RICHARD  
PARISH PRESIDENT

# Iberia Parish Government Preparedness State Resource Expectations

Several of the items that local agencies can request from the State have questionnaires that must be filled out. Contact the OHSEP office early enough so that we can forward these questionnaires to you. GOHSEP will not fill your request until you fill out these forms. Examples of these questionnaires include generator surveys, fuel needs, etc.

## Generator Information Sheet

POC Information: Marcus Broussard (337) 369-2431 (337) 519-2253

Location/Address: 3618 Broken Arrow Rd, New Iberia, LA

Delivery Time: 10/8/2020 a.m.

Do you have a backup generator? YES  NO

Have power requirements been determined?  YES NO

Provide Generator Size: KW \_\_\_\_\_ 500 \_\_\_\_\_

Voltage \_\_\_\_\_ 480 \_\_\_\_\_

Phase \_\_\_\_\_ 3 \_\_\_\_\_

Connection tie in: Do you need cables?  YES NO

How long should the cables be? 80 Feet

Do you have a transfer switch?  YES NO

Has an assessment been done on the facility?  YES NO

Do you have an electrician that can hook up the generator? YES  NO

Do you need GOHSEP to provide fuel for the generator? YES  NO

Are there any space restrictions that would impact placement and refuel operations? YES  NO

(If so, provide additional information that identifies constraints and special equipment/materials needed.) *Also needed, cam lock cables. Please advise how much fuel will be needed so that fuel vendor can be standing by.*



M. LARRY RICHARD  
PARISH PRESIDENT

# Iberia Parish Government Preparedness

## Response



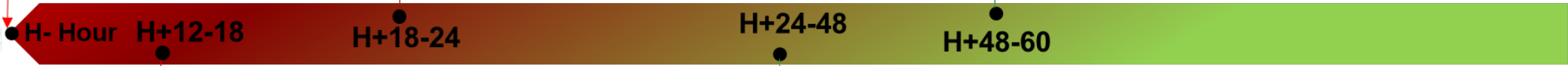
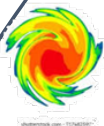
M. LARRY RICHARD  
PARISH PRESIDENT

# Iberia Parish Government Preparedness H-Hour Post-Storm

- H-HOUR**
- SAFE ROOM OPERATIONS COMMENCE
  - First Responders sheltering in place
  - EOC Staff monitors storm and damage reports
  - Continue NWS, GOHSEP conf calls
  - ESF-9 SAR Operations begin H-Hour to H+12 if safe operations allow
  - Begin publishing Damage.la.gov info if conditions in the parish exist

- **(H+18)** EOC begins the process of activating IA/PDA teams.
- Social media Update – 232 Help – and News media of new developments
- ESF-6 look at sheltering requirements and options internal to the parish
- Publish Damage.la.gov to public via all means of communication available
- Contact Food-N-Fun related to fuel availability
- Put in req for any SAR / Sheltering/ Transportation / LANG support into WEBEOC
- Begin process of looking for local shelter locations to relocate the COWM P2P evacuees
- Check with IMC
- Check in w/ IPSB about facilities and school openings
- Hold first ESF briefing and begin reporting community lifelines

- **(H+48)** Social media Update – 232 Help – and News media of new developments
- Request A/C activation 24/7
- Evaluate PPP evacuation numbers remaining – how long
- GOHSEP conf calls
- Request Parish flyover from GOHSEP



- **(H+12)** Winds below tropical storm force – first responders resume emergency services & begin assessing damage and utility statuses
- Curfew Indications: Is a 24-hour curfew necessary or should it only be during nighttime hours? Decisions regarding the sale and distribution of alcohol, the carrying of firearms and closing places of amusement and assembly should be made and released to the media.
- ESFs ascertain if they have the necessary staff to complete Parish mission requirements – brief Parish President on Parish Staff
- EOC reports utility outages and damages via SITREP
- ESF-9 SAR Operations continue
- Public works will begin cut and push - road clearing/debris removal operations
- Revisit Independent / assisted living facilities
- Begin discussing if PPP is needed to move residents out of parish
- Put in req for any SAR / Sheltering/ Transportation / LANG support into WEBEOC
- Begin cut and push
- Check in with Municipalities related to statuses

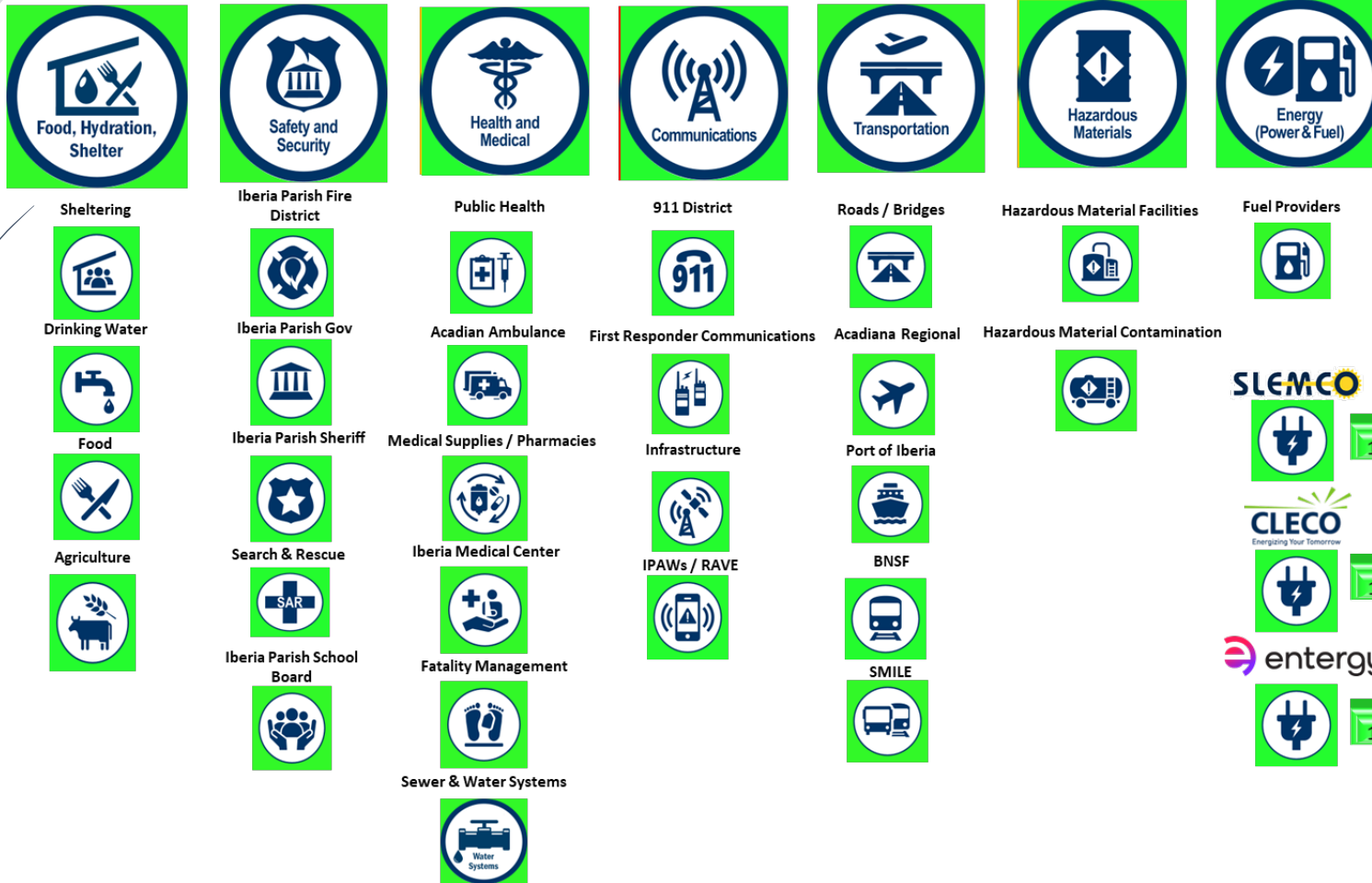
- **(H+24)** Social media Update – 232 Help – and News media of new developments
- Begin identifying DRC locations
- Validate POD pre-identified locations as good
- Begin returning P2P evacuees back home if feasible
  - Validate address with damage assessments
- Continue with WEBEOC Sitreps
- Continue Cut & Push Operations
- Continue with SAR as needed
- Check in with ESF-3 about road conditions and statuses
- Continue reporting community lifeline statuses
- Obtain current Utility Statuses
- Start evaluating virtual LA for damage patterns and redirect utilities
- Identify Donations warehouse if required
- Monitor sheltering operations if required



M. LARRY RICHARD  
PARISH PRESIDENT

# Iberia Parish Government Preparedness Community Lifelines

Green = Minimal Impact  
Amber = Nominal Impact  
Red = Significant impact  
Grey = Impact unknown



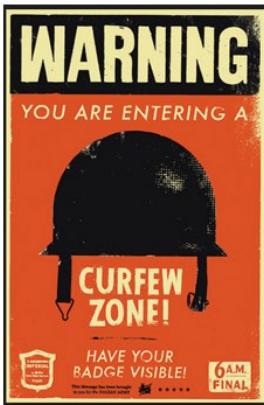
Challenges



M. LARRY RICHARD  
PARISH PRESIDENT

# Iberia Parish Government Preparedness Considerations

- Determine if a curfew is required
- Make re-entry decision. Implement Re-entry controls.
- Do we have any local sheltering or post storm evacuation requirements
- Can the local First Responders and Medical facilities support the population





M. LARRY RICHARD  
PARISH PRESIDENT

# Iberia Parish Government Preparedness Considerations

- Implement Re-entry controls if applicable
  - Tiered approach to reentry (Tiers 1-3)
  - Requirements
    - Iberia Parish Placard– renewed annually
    - Valid State Drivers License or Company ID
    - Letter of Access issued from Company
    - Marked Company vehicle





M. LARRY RICHARD  
PARISH PRESIDENT

# Iberia Parish Government Preparedness Considerations

- Initiate Search and Rescue operations if needed





M. LARRY RICHARD  
PARISH PRESIDENT

# Iberia Parish Government Preparedness

- Resume emergency responses when conditions permit.



**Iberia**  
MEDICAL CENTER





M. LARRY RICHARD  
PARISH PRESIDENT

# Iberia Parish Government Preparedness Individual Assistance Damage Assessments

PDA – Preliminary Damage Assessments (PDAs) are conducted to enable FEMA — as well as state, local, tribal, and territorial partners — to determine the magnitude of damage and impact of disasters. The process starts at the local level where damage details are initially collected and with state, tribal and territorial authorities.



M. LARRY RICHARD  
PARISH PRESIDENT

# Iberia Parish Government Preparedness Damage Assessments

Public: Debris removal, roads and bridges, water control facilities, buildings and equipment, utilities, parks and recreation

Individual : Destroyed, Major, Minor, Affected, Inaccessible

Until January 2024 the Louisiana State Fire Marshall (SFM) provided damage assessment teams. Louisiana State Fire Marshall (SFM) will not be conducting Individual (IA) Preliminary Damage Assessments (PDA). Iberia Parish must undertake the task of identifying and training IA/PDA teams to facilitate the assessments immediately after a storm, to include municipality teams.



M. LARRY RICHARD  
PARISH PRESIDENT

# Iberia Parish Government Preparedness Individual Assistance Damage Assessments

Public Input – publish QR code immediately for [Damage.la.gov](http://Damage.la.gov)

First Responder Input – Utilizing Survey 123 short form app – utilized without signing in – opportunistic while responding or patrolling

Survey Team Input – Utilizing Survey 123 short form app – utilized without signing in

[GOHSEP Damage Assessment Short  
Form Survey](#)



[GOHSEP Damage Assessment  
Complete Form Survey](#)





M. LARRY RICHARD  
PARISH PRESIDENT

# Iberia Parish Government Preparedness

# Recovery



M. LARRY RICHARD  
PARISH PRESIDENT

# Iberia Parish Community Emergency Response Team

Iberia Parish Government is fortunate to have a volunteer organization that assists with disaster response and recovery. The Community Emergency Response Team or CERT program educates volunteers about disaster preparedness for hazards that could impact our area. Volunteers are trained in skills such as fire safety, light search and rescue, team organization, basic first aid and sheltering. CERT is also heavily involved with evacuating citizens prior to a disaster and running shelter operations in Iberia Parish. If you or if you know of someone interested in becoming a CERT volunteer, please contact Iberia Parish Office of Homeland Security and Emergency Preparedness at 337-369-4427.





M. LARRY RICHARD  
PARISH PRESIDENT

# Iberia Parish Community Emergency Response Team

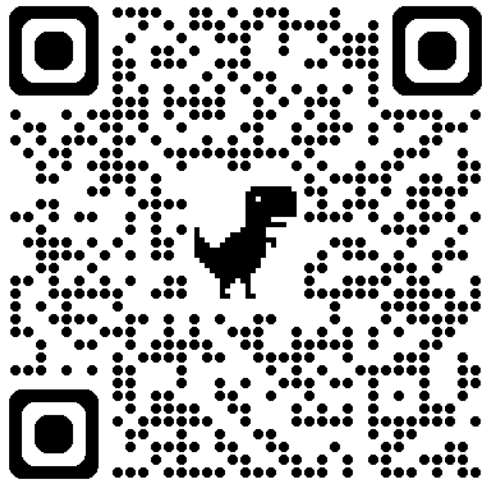
- Flood in Aug 2016:
  - Ran the public shelter for a period of approximately 7 days, cooking and feeding the public shelter residents 3 hot meals each day.
  - Received, cataloged and distributed all donated goods.
  - In addition, they transported shelter residents to their homes to retrieve items they needed, to appointments, to get clothes from the local Goodwill and much, much more.
- Tornado 2022:
  - Assessed immediate needs of the affected public
  - Removed debris
  - Tarped roofs
  - Fed work crews
- Hurricane Francine Sep 2024:
  - Setup a Shelter at the Ward 8 recreation center in the anticipation of the Parishes Sheltering needs
- Winter weather in Jan 2025:
  - Ran the Iberia Parish / City of NI warming Center for 3 days
  - Provided meals and support during the entire duration





M. LARRY RICHARD  
PARISH PRESIDENT

# Iberia Parish Community Emergency Response Team



The Iberia Parish CERT Team will host their community preparedness event "Parish Prepared 2025" on 5 June 2025, 5:30pm @ the Sliman Theatre.

<https://www.facebook.com/CERTIberia/>





M. LARRY RICHARD  
PARISH PRESIDENT

# Iberia Parish Government Preparedness Points of Distribution (PODs)

- Iberia Parish has the ability to request PODs after a storm
- PODs consist primarily of
  - Water
  - MRE's
  - ICE
- Note: PODs will be discontinued when local businesses open and/or DSNAP is operations begin



M. LARRY RICHARD  
PARISH PRESIDENT

# Iberia Parish Government Preparedness Points of Distribution (PODs)

## CRITERIA

- 40 – 50% of the citizens in the affected area did not/could not evacuate and they remain in the affected area after the event.
- The affected area has at least 30 – 40% power outage and will not have power restored for at least 6 – 7 days from the date of the POD request by the Parish.
- There are no open retail grocery stores that sell life sustaining commodities within 10 miles or 20 minutes driving time of the affected area, or the road network is compromised to such an extent that the affected population cannot travel to open retail grocery stores.
- Any costs associated with the POD may require a 25% local share. See the below table for estimated weekly costs of PODs.



M. LARRY RICHARD  
PARISH PRESIDENT

# Iberia Parish Government Preparedness Disaster Supplemental Nutrition Assistance Program (DSNAP)

- DSNAP location is pre-determined by the Parish and DCFS
- Iberia Parish DSNAP location is SLCC (can be virtual if approved by Federal Officials)
- DSNAP will not occur if no IA declaration exists for the Parish
- Cannot be opened while PODs are open
- Should be opened when the community can support the spending (i.e. grocery stores open, electricity, etc.)



M. LARRY RICHARD  
PARISH PRESIDENT

# Iberia Parish Government Preparedness

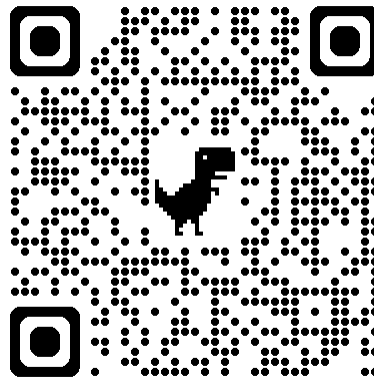
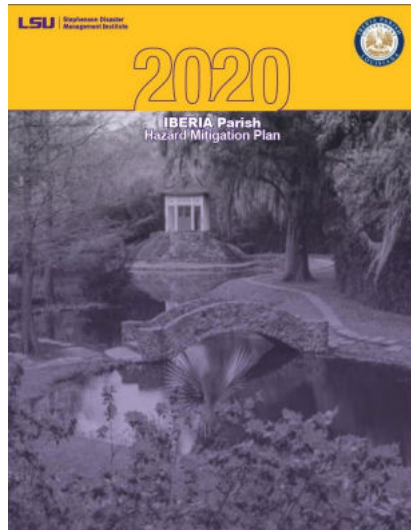
## Mitigate



M. LARRY RICHARD  
PARISH PRESIDENT

# Iberia Parish Government Preparedness Hazard Mitigation

- The Parish maintains a comprehensive Hazard Mitigation plan compiled in conjunction with Stephenson Disaster Management Institute.
- A review and rewrite of the plan will take place in 2026.



<https://iberiaparishgovernment.com/wp-content/uploads/Iberia-Parish-HMP-2020.pdf>



M. LARRY RICHARD  
PARISH PRESIDENT

# Iberia Parish Government Preparedness Hazard Mitigation

- Iberia Parish currently has 2 separate home elevation grants in excess of 2.5m dollars
- Iberia Parish currently has 3 active Hazard Mitigation grants totaling 6.5m dollars
  - Hardening of Public works building
  - Jail generator
  - Parc Perdue Retention / drainage project



M. LARRY RICHARD  
PARISH PRESIDENT

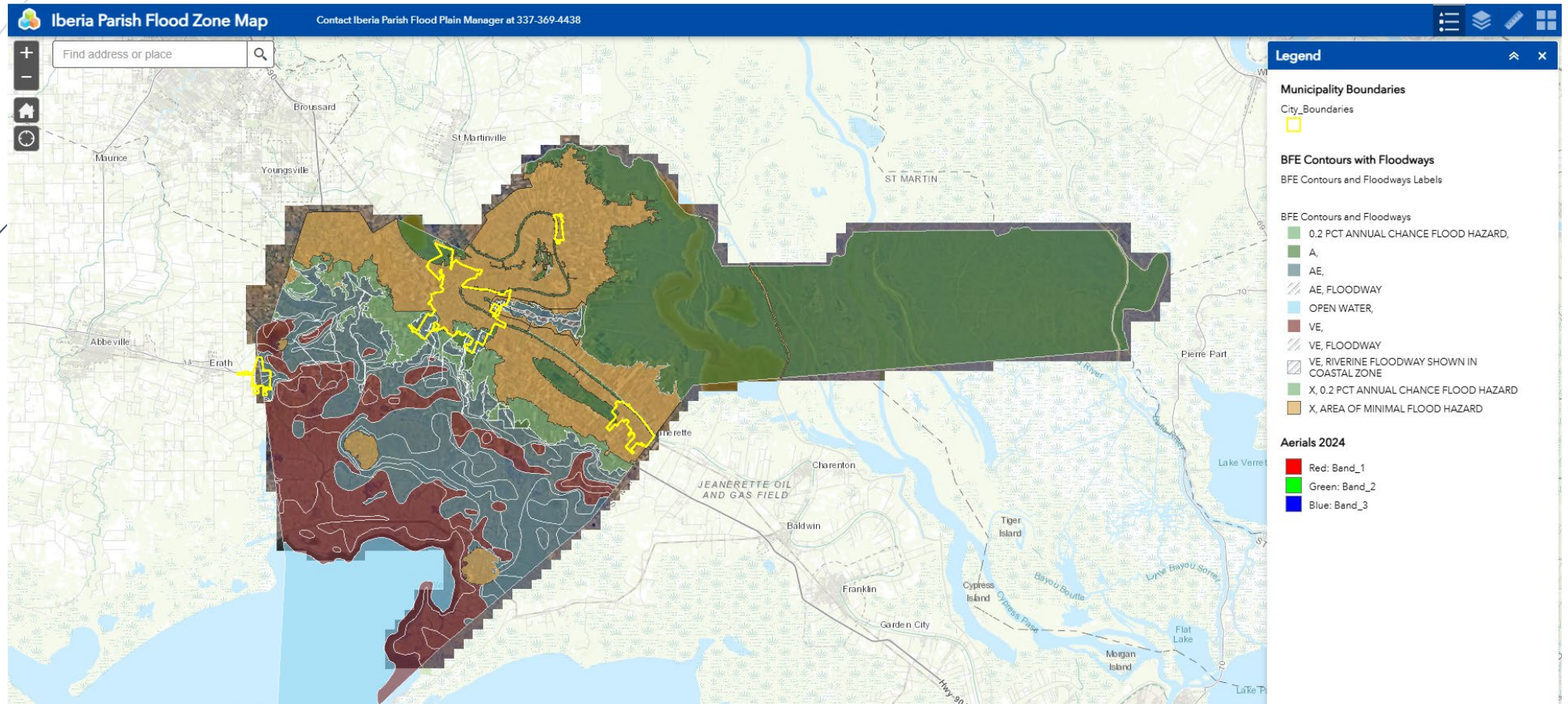
# Iberia Parish Government Preparedness NFIP Substantial Damage Rule

- Any structure substantially damaged and in Special Flood Hazard Area (SFHA)
- Cannot be repaired until elevated IAW FEMA FIRM Map
- Cannot be repaired until in code compliance
- “Substantially damaged” is defined as equal to or exceeds 50% of the market value of the structure before the damage



M. LARRY RICHARD  
PARISH PRESIDENT

# Iberia Parish Government Preparedness NFIP Substantial Damage Rule





# Questions Closing Remarks

