



2025 STATE OF THE PARISH

M. Larry Richard - Iberia Parish President

#ProgressInIberiaParish

Welcome!



2025 STATE OF THE PARISH

M. Larry Richard - Iberia Parish President

#ProgressInIberiaParish



IBERIA PARISH GOVERNMENT

2025 State of the Parish

Finance



Erica Duplechain, Director

- ❖ The Finance Department oversees all financial accounting functions for Iberia Parish Government, including:
 - Collection of Revenues
 - Payment of Expenditures
 - Conducting Related Reconciliations
- ❖ It also plays a key role in budgeting and auditing processes to ensure accurate financial management and accountability.



IBERIA PARISH GOVERNMENT

2025 State of the Parish

Finance - Cash On Hand

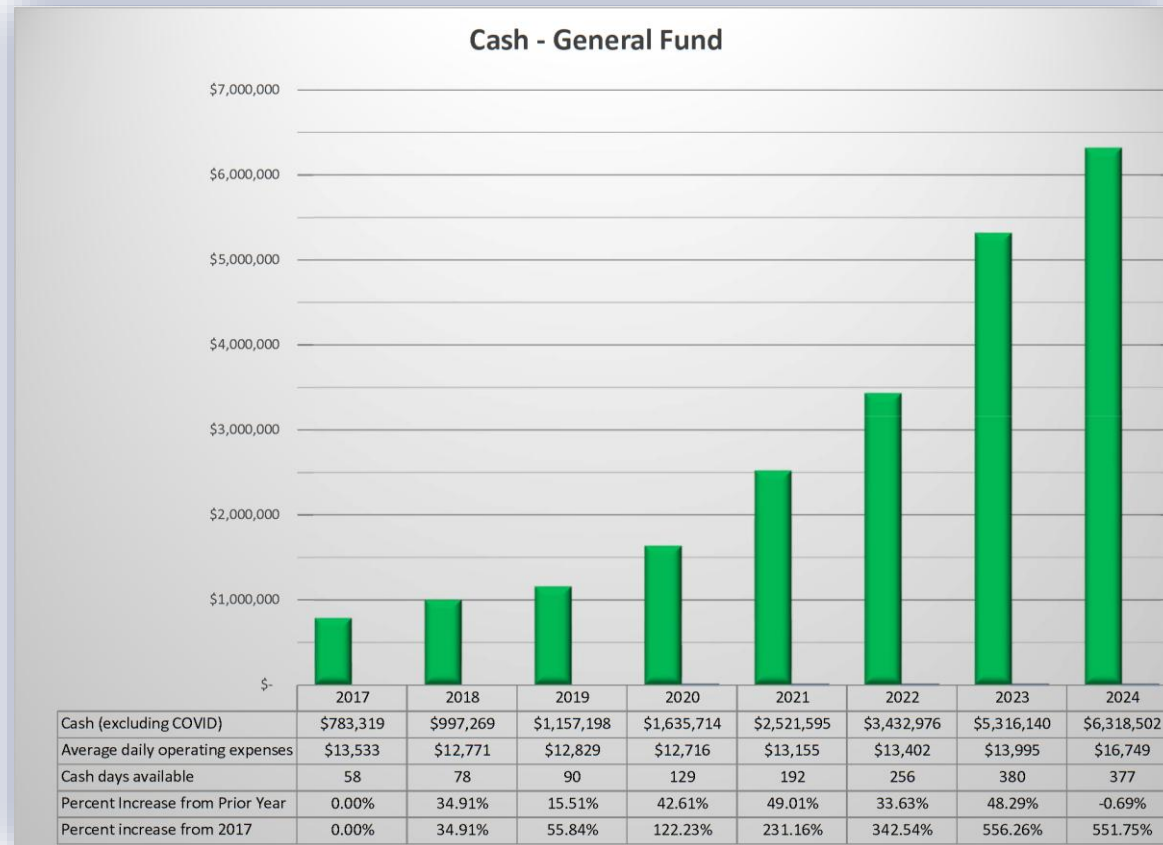
Year	Cash On Hand	Days of Sustainable Operation	Growth (Days)
2024	\$6,318,508	377	1100%
2023	\$5,316,140	380	1210%
2022	\$3,432,976	256	783%
2021	\$2,521,595	192	562%
2020	\$1,635,714	129	345%
2019	\$1,157,198	90	210%
2018	\$997,269	78	169%
2017	\$783,319	58	100%
2016	\$460,014	29	-



IBERIA PARISH GOVERNMENT

2025 State of the Parish

Finance - General Fund

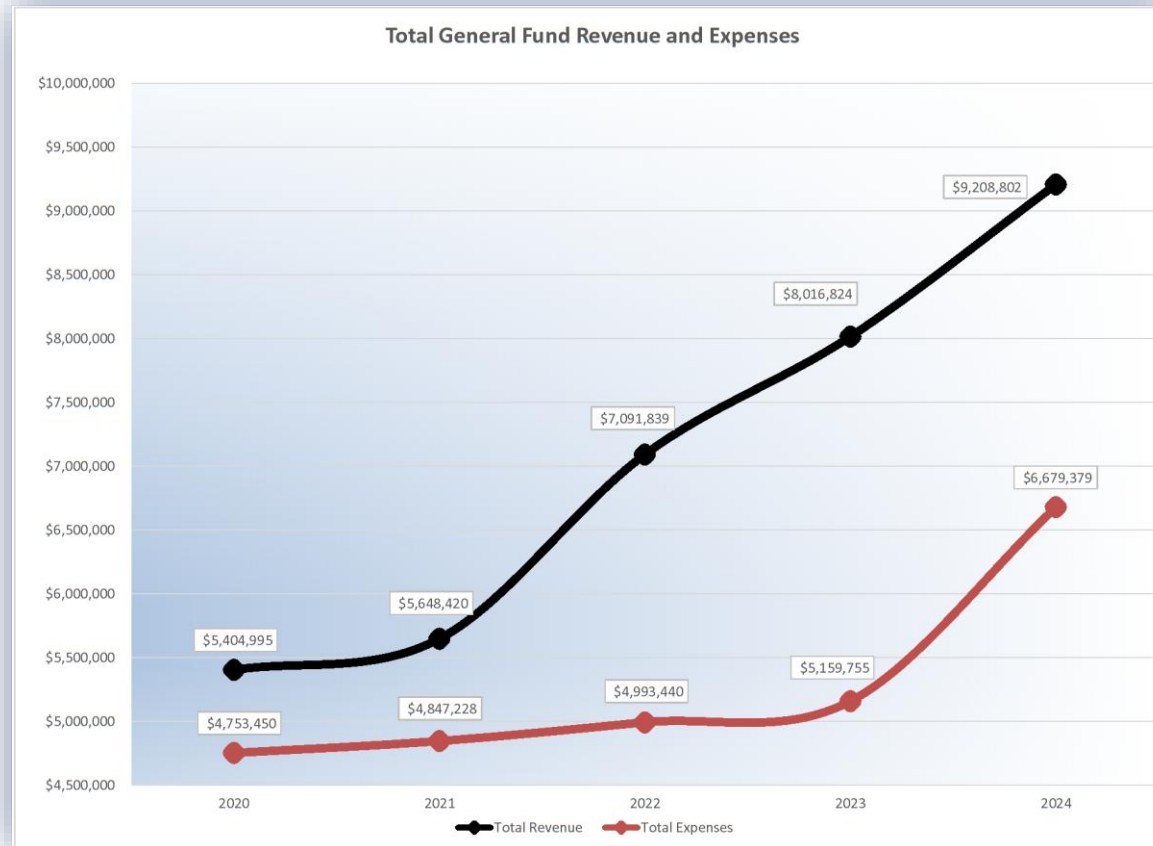




IBERIA PARISH GOVERNMENT

2025 State of the Parish

Finance – Revenues & Expenses

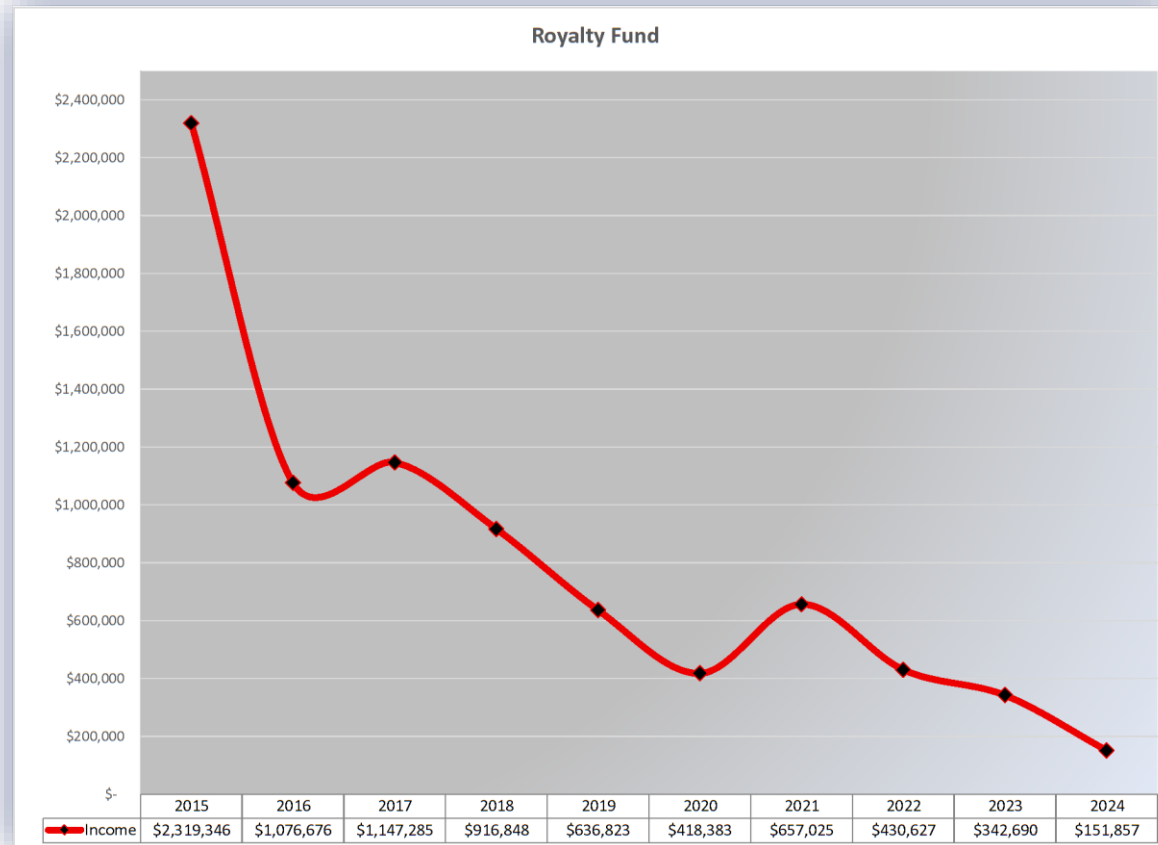




IBERIA PARISH GOVERNMENT

2025 State of the Parish

Finance - Royalty Fund





IBERIA PARISH GOVERNMENT

2025 State of the Parish

Public Works



Jean D. Romero, Director

- ❖ Public Works is responsible for Land Management and Water Management in Iberia Parish.
- ❖ The department employs 30 workers and is currently hiring.



IBERIA PARISH GOVERNMENT

2025 State of the Parish

Public Works - Land Management

❖ Maintaining 400+ miles of Parish Roads and 66 Bridges (55 off-system)

- Road Repairs
- Road Grading
- Road Striping
- Roadside Weed Control
- Road Signage
- Washouts
- Tree Removal
- Tree Trimming
- Right of way Clearing
- Slashbusting
- Grass Cutting
- Spraying
- Landfill Operations
- Illegal Dumping
- Tire Disposal
- Litter Abatement





IBERIA PARISH GOVERNMENT

2025 State of the Parish

Public Works - Water Management

❖ Maintaining over 800 miles of roadside ditches, field laterals, and main channels

- Bulkheads
- Catch Basins
- Culverts
- Boat Landings
- Ditch Cleaning
- Channel Cleaning
- Silt Removal
- Beaver Dams





IBERIA PARISH GOVERNMENT

2025 State of the Parish

Public Works - Drainage Work Completed

- ❖ January 2016 - November 2025
 - Roadside Drainage/Cleaning: 561 Miles = 2,962,080 ft
 - Slashbusting/Right-of-Way Clearing: 103.3 Miles = 545,424 ft
 - Main Channel/Lateral Cleaning: 186.8 Miles = 986,304 ft





IBERIA PARISH GOVERNMENT

2025 State of the Parish

Public Works - Drainage Work Completed

❖ Channel M-10 (Outsourced)



❖ Channel L-2D4 (Outsourced)





IBERIA PARISH GOVERNMENT

2025 State of the Parish

Flood Control Structures

- ❖ Jefferson Canal North
 - Completed June 2024



- ❖ Jefferson Canal South
 - Completed September 2024



- ❖ Peebles Coulee
 - Under Construction





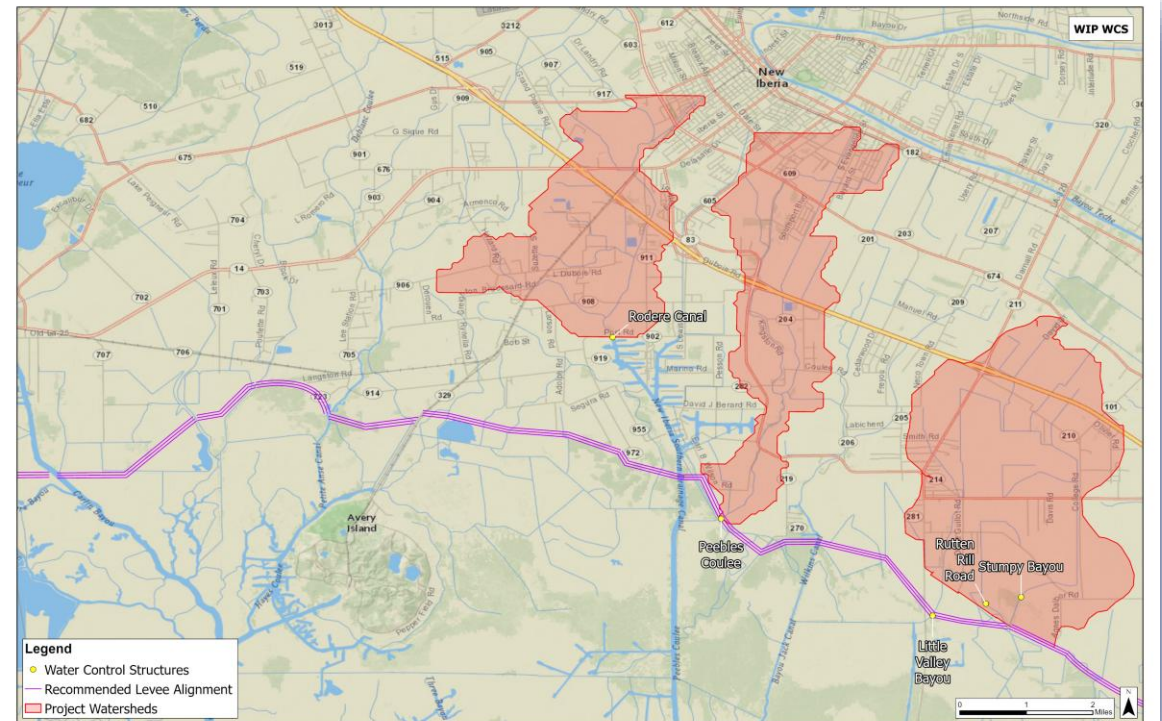
IBERIA PARISH GOVERNMENT

2025 State of the Parish

Flood Control Structures

❖ Upcoming Projects (Bidding)

- Little Valley Bayou
- Rutten Rill
- Stumpy Bayou
- Project Total \$19.3 Million
- Funded by CPRA & GOMESA





IBERIA PARISH GOVERNMENT

2025 State of the Parish

Flood Control Structures

❖ Upcoming Projects (Beginning Design)

- Commercial Canal
- Delcambre Canal
- Engineering & Design \$15 Million
- Construction \$210 Million
- Funded by CPRA





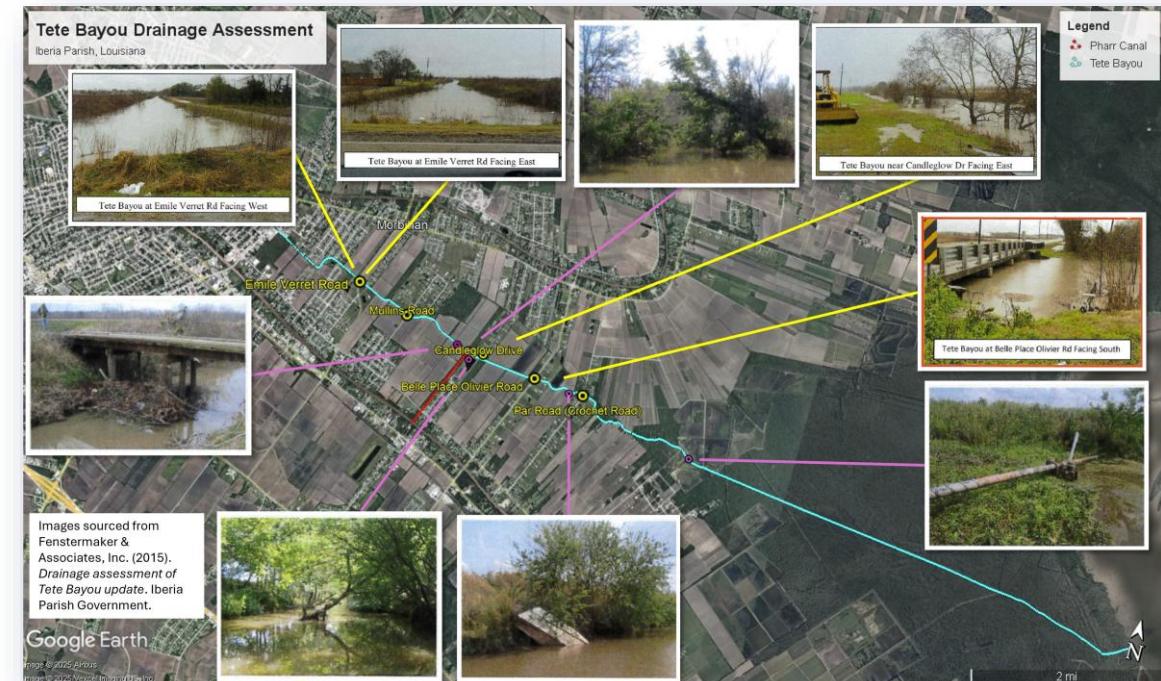
IBERIA PARISH GOVERNMENT

2025 State of the Parish

Drainage Studies

❖ Tete Bayou

- Sedimentation and restricted channels are key flooding drivers.
- Flooding impacts homes, farmland, and road access.
- Targeted channel and outfall improvements increase conveyance.
- Combined improvements provide the greatest watershed benefit.





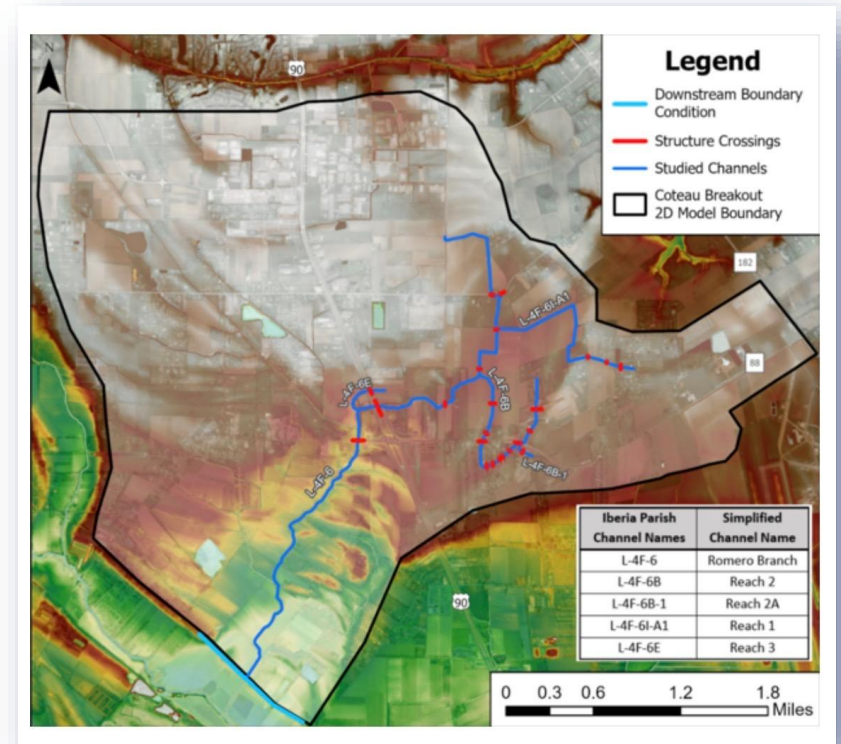
IBERIA PARISH GOVERNMENT

2025 State of the Parish

Drainage Studies

❖ Coteau

- Limited channel capacity, adverse slopes, and undersized culverts drive flooding.
- Flooding is concentrated near Coteau Park and along Laurent Armentor Road.
- No single project eliminates flooding; combined improvements perform best.
- Channel regrading, added detention, and a diversion channel provide the greatest long-term benefit.





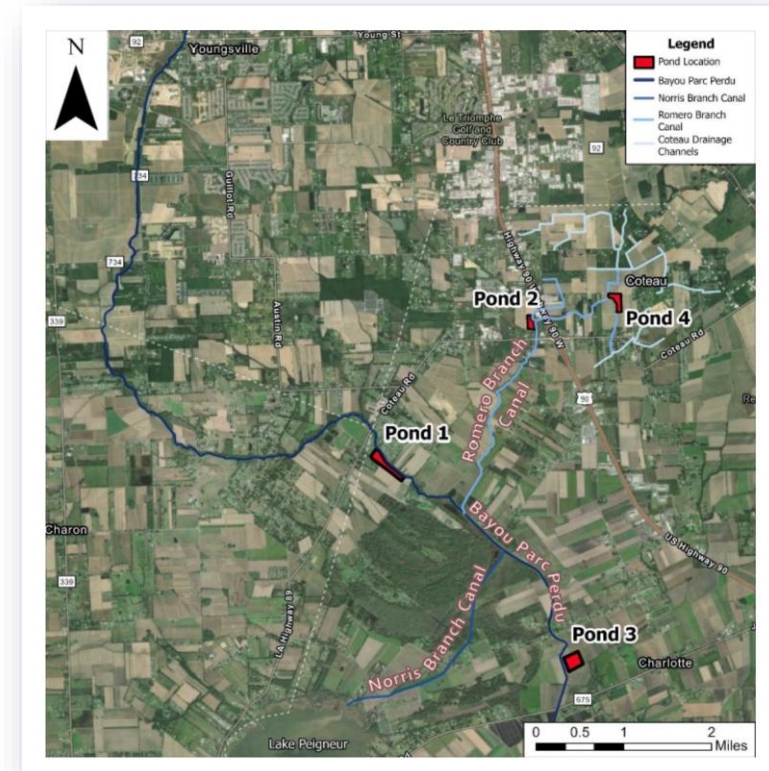
IBERIA PARISH GOVERNMENT

2025 State of the Parish

Drainage Studies

❖ Bayou Parc Perdu

- Regional detention delivers the highest flood-reduction benefit.
- 11-acre basin provides ~83 acre-feet of stormwater storage.
- Flow controls reduce peak flooding and downstream impacts.
- Modeling confirms measurable flood-level reductions.





Iberia Parish Drainage Maintenance Prioritization

- [illegible]



IBERIA PARISH GOVERNMENT

2025 State of the Parish

Roadway Improvement Projects

❖ Phase 1 Project A – Engineering Firm: Berard, Habetz & Associates | Contractor: Glenn Lege

- C. Romero Rd. (District 5) – under construction
- Jack Brooks Rd. (District 10) – under contract
- Monnet Rd. (District 12) – under contract
- L. Dubois Rd. (District 13) – under construction
- Soilleau Rd. (District 14) – under construction
- General Patton Rd. (District 14) – under construction
- General Bradley St. (District 14) – under construction
- General Chappuis St. (District 14) – under construction
- General Collins St. (District 14) – under construction
- General Middleton St. (District 14) – under construction



IBERIA PARISH GOVERNMENT

2025 State of the Parish

Roadway Improvement Projects

- ❖ Phase 1 Project B – Engineering Firm: Sellers& Associates | Apparent Low Bidder: Glenn Lege
 - Daspit Rd., RR to Hwy 86 (Districts 3 & 8) – pending contract
 - Country Ln. District 8) – pending contract
 - Northside Rd. (District 9) – pending contract
 - Teche Lake Canal Rd. (District 9) – pending contract



IBERIA PARISH GOVERNMENT

2025 State of the Parish

Roadway Improvement Projects

❖ Phase 1 Project C – Engineering Firm: GEC | Contractor: Elliott Construction

- Leon Landry Rd. (District 2) – under construction
- Agnes Broussard Rd. (District 2) – under contract
- Julian Buteaux St. (District 2) – under contract
- Joey St. (District 2) – under contract
- Wanda St. (District 2) – under contract
- Ronald Cir. (District 2) – under contract
- Brenda Dr. (District 2) – under contract
- Phyllis Dr. (District 2) – under contract
- Cromwell Dr. (District 3) – under contract
- Leonce Theriot Rd. (District 3) – under contract
- George Sique Rd. (District 3) – under contract
- Kramer Dr. (District 5) – under contract
- Erath St. (District 5) – under contract
- S. Kramer Dr. (District 5) – under contract
- Chet St. (District 5) – under contract
- Charlotte St. (District 5) – under contract
- Oil Center Dr. (District 6) – under contract
- Darnall Rd. (Districts 10 & 11) – under contract
- Nelson Canal Rd. (District 11) – under contract



IBERIA PARISH GOVERNMENT

2025 State of the Parish

Roadway Improvement Projects

- ❖ South Lewis Street – Engineering Firm: Berard, Habetz & Associates | Contractor: Glenn Lege



construction complete





IBERIA PARISH GOVERNMENT

2025 State of the Parish

Roadway Improvement Projects

- ❖ Innovation Boulevard – Engineering Firm: Fenstermaker | Contractor: Glenn Lege



construction complete



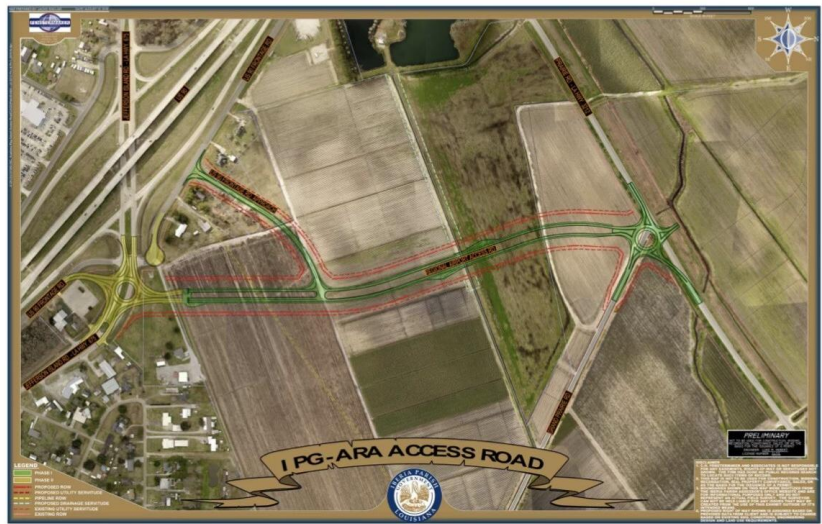


IBERIA PARISH GOVERNMENT

2025 State of the Parish

Roadway Improvement Projects

- ❖ Corporate Drive Roundabout – Engineering Firm: Fenstermaker | Contractor: Glenn Lege



construction complete



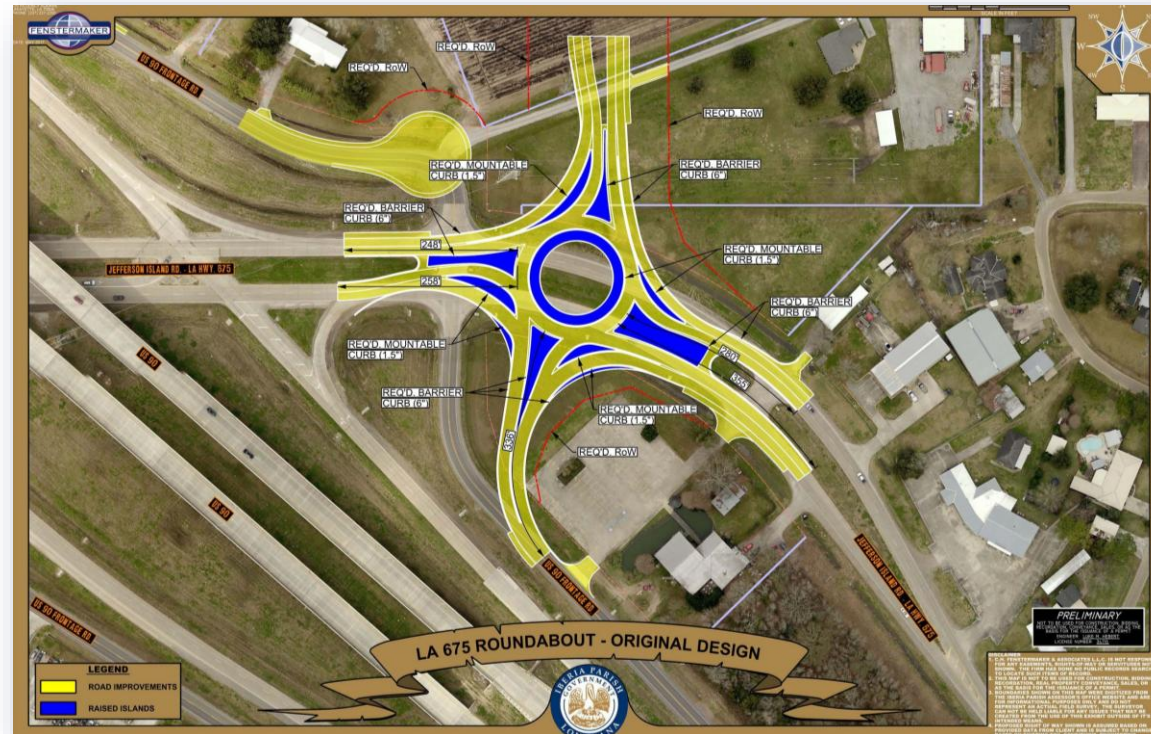


IBERIA PARISH GOVERNMENT

2025 State of the Parish

Roadway Improvement Projects

- ❖ Hwy 675 Roundabout – Engineering Firm: Fenstermaker | DOTD project





IBERIA PARISH GOVERNMENT

2025 State of the Parish

Acadiana Regional Airport



Maurice "Moe" Songy, Director

- ❖ Acadiana Regional Airport is a public use airport owned by Iberia Parish Government.
- ❖ It serves as a helicopter flight training location for several companies and is also used on a regular basis by NASA, the U.S. Air Force, and U.S. Navy as a cross-country flight training destination.
- ❖ Acadiana Regional Airport has approximately 1,200 acres of property for development including prime runway and taxiway frontage.



IBERIA PARISH GOVERNMENT

2025 State of the Parish

Acadiana Regional Airport (ARA)





IBERIA PARISH GOVERNMENT

2025 State of the Parish

Acadiana Regional Airport (ARA)

❖ First Solar

- \$1.1 billion advanced manufacturing facility creating more than 800+ new jobs and strengthening Iberia Parish's industrial base.
- Significant increase in local and parish revenue through property taxes, payroll, and long-term economic activity.
- Strategic location within Acadiana Regional Airport enhances logistics, infrastructure investment, and long-term economic growth.





IBERIA PARISH GOVERNMENT

2025 State of the Parish

Acadiana Regional Airport (ARA)

❖ ULL New Iberia Research Center Bio-Safety Lab Level-3

- State-of-the-art biosafety research facility under construction.
- Expands scientific research and vaccine development capacity for UL Lafayette and partners.
- Represents a major investment in public health, innovation, and economic growth for Iberia Parish.





IBERIA PARISH GOVERNMENT

2025 State of the Parish

Acadiana Regional Airport (ARA)

❖ Progress Point Business Park

- BioInnovation Accelerator planned as the anchor project, fostering collaboration between UL Lafayette and industry.
- Attracts advanced manufacturing, biotech, and tech-based enterprises to Iberia Parish.
- Offers fully serviced sites with modern infrastructure and key transportation access.
- Drives job creation, private investment, and long-term parish revenue growth.





IBERIA PARISH GOVERNMENT

2025 State of the Parish

Port of Iberia



- ❖ The Port of Iberia is a 2,000-acre industrial and maritime complex serving South Louisiana.
- ❖ It provides multi-modal access by water, rail, and highway to regional and global markets.
- ❖ Located along the Gulf Intracoastal Waterway, the Port supports energy, marine, and manufacturing industries.
- ❖ A vital hub for commerce, logistics, and economic growth in Iberia Parish and the Acadiana region.



IBERIA PARISH GOVERNMENT

2025 State of the Parish

Port of Iberia

❖ Road Projects

- Two major road projects are advancing to improve traffic flow and access within the Port.
 - David Berard Rd.
 - Cornelius Voorhies Rd.
- Upgrades will support heavier industrial traffic and enhance safety for tenants and visitors.
- Designed to accommodate current and future expansion of port operations.





IBERIA PARISH GOVERNMENT

2025 State of the Parish

Port of Iberia

❖ Cajun Industries

- Cajun Industries has established operations at the Port of Iberia.
- Expected to create over 600 new jobs in construction and skilled trades.
- Expands the Port's capacity to support large-scale fabrication, shipping, and workforce development.





IBERIA PARISH GOVERNMENT

2025 State of the Parish

Port of Iberia

❖ Louisiana Concrete Products

- New production facility at the Port of Iberia manufacturing precast components used in infrastructure and marine construction.
- Will create approximately 300 jobs in production, transportation, and support services.
- Strengthens the Port's position as a regional hub for fabrication and logistics.





IBERIA PARISH GOVERNMENT

2025 State of the Parish

Port of Iberia

❖ E-Crane 'Creole King' Christening

- A state-of-the-art, barge-mounted stevedoring crane assembled at the Port of Iberia.
- 75 feet tall, 125-foot reach, and 52-ton lift capacity with advanced clamshell grabs.
- Uses 80% less fuel and half the horsepower of traditional cranes.
- A \$6 million investment enhancing logistics capacity and job creation.





IBERIA PARISH GOVERNMENT

2025 State of the Parish

Port of Iberia

❖ Millennium Expansion Groundbreaking

- Expanding ~90 acres with 50 acres of new waterfront.
- Includes a 13-ft-deep slip for industrial use.
- Supported by \$2.4M in state funding.
- Dredging underway to connect to existing slips.
- Designed to increase capacity and attract new tenants.





IBERIA PARISH GOVERNMENT

2025 State of the Parish

Waterworks District #3



Brad Cradeur, Director

- ❖ Waterworks District No. 3 ensures safe and efficient potable water for Iberia Parish residents according to guidelines provided by the Department of Health.
- ❖ The system produces 1.5 million gallons daily, serving 2,900 customers through 150 miles of water lines.



IBERIA PARISH GOVERNMENT

2025 State of the Parish

Waterworks District #3 (Coteau)

❖ Infrastructure Improvements

- New two-million-gallon-per-day water plant at the Acadiana Regional Airport expanding capacity and improving reliability for residential, commercial, and industrial customers.
- New 1,400 GPM water well and 500,000-gallon storage tank with tri-plex pump system to further strengthen production and distribution.
- Upgrades to the existing water plant include a fourth filter, new valves, fittings, and an electrical control panel to enhance treatment efficiency.
- SCADA monitoring system installed for remote system oversight, alarms, and faster operational response.
- 43,000 feet of new water mains installed since 2016, extending safe, reliable service to new subdivisions, mobile home parks, and businesses throughout the Coteau area.



IBERIA PARISH GOVERNMENT

2025 State of the Parish

Sewerage District #1



Brad Cradeur, Director

- ❖ Sewerage District No. 1 ensures the health and safety of Iberia Parish residents through wastewater treatment and collection, according to guidelines provided by the Department of Environmental Quality and the Environmental Protection Agency.
- ❖ It maintains over 80 miles of sewer lines, serving more than 3,500 residential and commercial customers.



IBERIA PARISH GOVERNMENT

2025 State of the Parish

Sewerage District #1

❖ Infrastructure Improvements

- 18-inch force main relocation and new lift station completed at the Acadiana Regional Airport to support First Solar and future industrial expansion.
- Phase 1 Water Sector Grant added 12 permanent and 4 towable generators, improving system reliability parish-wide.
- Phase 2 Water Sector Grant will rehabilitate sewer lines, upgrade lift stations in Orange Grove, construct a new Breaux Estates plant, and replace aging facilities at Beau Fleu and Oil Center.
- Highway 90 Sewer Expansion Project will extend service from Arceneaux Ford to LeBlanc Kia, connecting to Progress Point infrastructure.
- Planned \$60 million, 3 MGD wastewater treatment plant near the Acadiana Regional Airport will expand capacity, enhance reliability, and support continued parish growth.



IBERIA PARISH GOVERNMENT

2025 State of the Parish

Fiber to the Home & Business

- Partnership established with Cajun Broadband to deliver high-speed service to underserved areas.
- Over 2,500 homes and businesses in Coteau already connected through earlier FTTH projects.
- Groundbreaking ceremony held in October 2024 to launch parish-wide fiber expansion.
- \$5.2 million broadband grant supporting new fiber routes and system upgrades.
- Additional construction phases underway extending along key corridors near Hwy 90 and Coteau.





IBERIA PARISH GOVERNMENT

2025 State of the Parish

Expanding Housing Opportunities in Iberia Parish

- ❖ **Ravenwood Subdivision**
 - Phase I development is underway, introducing 100 residential lots to the community.
- ❖ **Coteau Ridge Subdivision**
 - Development continues with Phase 3, expanding the subdivision to 202 total residential lots.
- ❖ **Teche Ridge Subdivision**
 - Residential construction is actively moving forward within this established neighborhood.
- ❖ **Cherokee Real Estate Development**
 - A 22.1-acre tract has been subdivided into 13 residential lots, supporting future home construction.





IBERIA PARISH GOVERNMENT

2025 State of the Parish

Animal Control



Amanda Istre, Manager

- ❖ Iberia Parish Animal Control is dedicated to promoting public safety and responsible pet ownership through humane animal care and community education.
- ❖ The department responds to animal-related calls, enforces local ordinances, and ensures the safe and compassionate sheltering of stray, lost, and abandoned animals.



IBERIA PARISH GOVERNMENT

2025 State of the Parish

Animal Control (IPAC)

❖ New Animal Control Shelter

- Bid Opening February 5th .
- Modern facility will include expanded kennel space and improved housing conditions.
- Dedicated intake, adoption, and quarantine areas enhance safety and efficiency.
- Designed to support higher adoption rates and improve overall animal welfare.



ANIMAL CONTROL SHELTER
IBERIA PARISH RABIES CONTROL

PAUL J. ALLAIN
ARCHITECT
APAC - A PROFESSIONAL ARCHITECTURAL CORPORATION



IBERIA PARISH GOVERNMENT

2025 State of the Parish

Infrastructure Investments in Iberia Parish

- ❖ Airport Development: \$8,928,392.43
- ❖ Community Recreation & Quality of Life: \$3,218,843.61
- ❖ Drainage & Flood Control: \$16,319,231.84
- ❖ Economic Development & Industrial Expansion: \$1,317,900,000.00
- ❖ Library System Enhancements: \$2,943,706.00
- ❖ Public Facilities & Buildings: \$12,419,409.99
- ❖ Public Safety & Emergency Response: \$6,175,739.00
- ❖ Technology & Modernization: \$4,342,500.00
- ❖ Transportation & Bridges: \$221,045,599.75
- ❖ Water & Sewer Infrastructure: \$38,025,491.47



IBERIA PARISH GOVERNMENT

2025 State of the Parish

Future Investments in Iberia Parish

- ❖ Commercial Canal & Delcambre Canal: \$235,000,000.00
- ❖ East Side Development at ARA: \$63,916,527.00
- ❖ Post Evacuation Center at Acadiana Fairgrounds: \$12,000,000.00
- ❖ Hangar Dr. Extension: \$16,000,000.00
 - (Hangar Dr. to LaSalle St., LaSalle St. to Corporate Dr., Roundabout at Corporate Dr, Corporate Dr. widening)
- ❖ Iberia Parish Sewer Plant: \$60,000,000.00
- ❖ LA 675 Grand Prairie Rd. Intersection Improvements: \$3,500,000.00
- ❖ LA 675 Roundabout: \$6,900,000.00
- ❖ Little Valley, Rutten Rill, Stumpy Bayou Water Control Structures: \$12,900,000.00
- ❖ Progress Point Business Park Future Roadway: \$9,700,000.00
- ❖ West Airport Roadway Project Phases I, II & III: \$28,800,000.00
 - Roundabout at LA 88, Corporate Dr. to Seaway Access Rd. & Seaway Access Rd. to LA 88



IBERIA PARISH GOVERNMENT

2025 State of the Parish

Total Investment Dollars
In Iberia Parish

\$2,080,035,441.09



IBERIA PARISH GOVERNMENT

2025 State of the Parish

Growth in Jobs, Wages & Industry

Key Economic Indicators

Indicator	2016 (Estimated)	2025 (Current/Estimated)	Change/Trend
Unemployment Rate	7–8%	4.5–5.2%	↓ Significant improvement
Employed Residents	~24,000	~27,000	↑ +3,000 jobs
Labor Force Participation	~48%	~51–52%	↑ More residents working
Median Household Income	~\$42,000	~\$52,000	↑ +\$10,000 growth
Economic Dependence	Heavily tied to Oil & Gas	More diversified employment	↑ Increased resilience
Small Business Activity	Slowed by industry downturn	Growth in service, trade, and contracting	↑ More startups and retention

Sector Overview

Sector	2016 Primary Role	2025 Trend/Role	Overall Direction
Oil & Gas / Marine Services	Dominant employer	Still active but no longer primary	↓ Relative dependence
Health Care & Social Assistance	Growing sector	Largest employment sector	↑ Strong expansion
Manufacturing & Fabrication	Moderate presence	Increased investment & hiring	↑ Rising demand
Retail & Service	Consistent	Stabilized with population shifts	↔ Steady
Construction & Contracting	Project-based	Boosted by industrial and public works	↑ Rebounded
Logistics & Port Activity	Support role	Strategic driver with port expansion	↑ Accelerating
Small Business / Local Enterprise	Slowed by downturn	More openings, better retention	↑ Recovering and growing



IBERIA PARISH GOVERNMENT

2025 State of the Parish

Economic Outlook for Iberia Parish

- ❖ Iberia Parish is entering a period of sustained economic momentum driven by private investment and strategic infrastructure improvements.
- ❖ Continued growth at the Port of Iberia is strengthening the parish's industrial base and expanding manufacturing and maritime activity.
- ❖ Major investments at Acadiana Regional Airport are positioning the parish as a hub for advanced manufacturing and aviation industries.
- ❖ Workforce opportunities are expanding across multiple sectors, reducing reliance on any single industry.
- ❖ Strong public-private collaboration is laying the foundation for long-term job growth, higher wages, and economic stability.

2025 STATE OF THE PARISH

M. Larry Richard - Iberia Parish President



*Thank you for
joining us!*

#ProgressInIberiaParish

